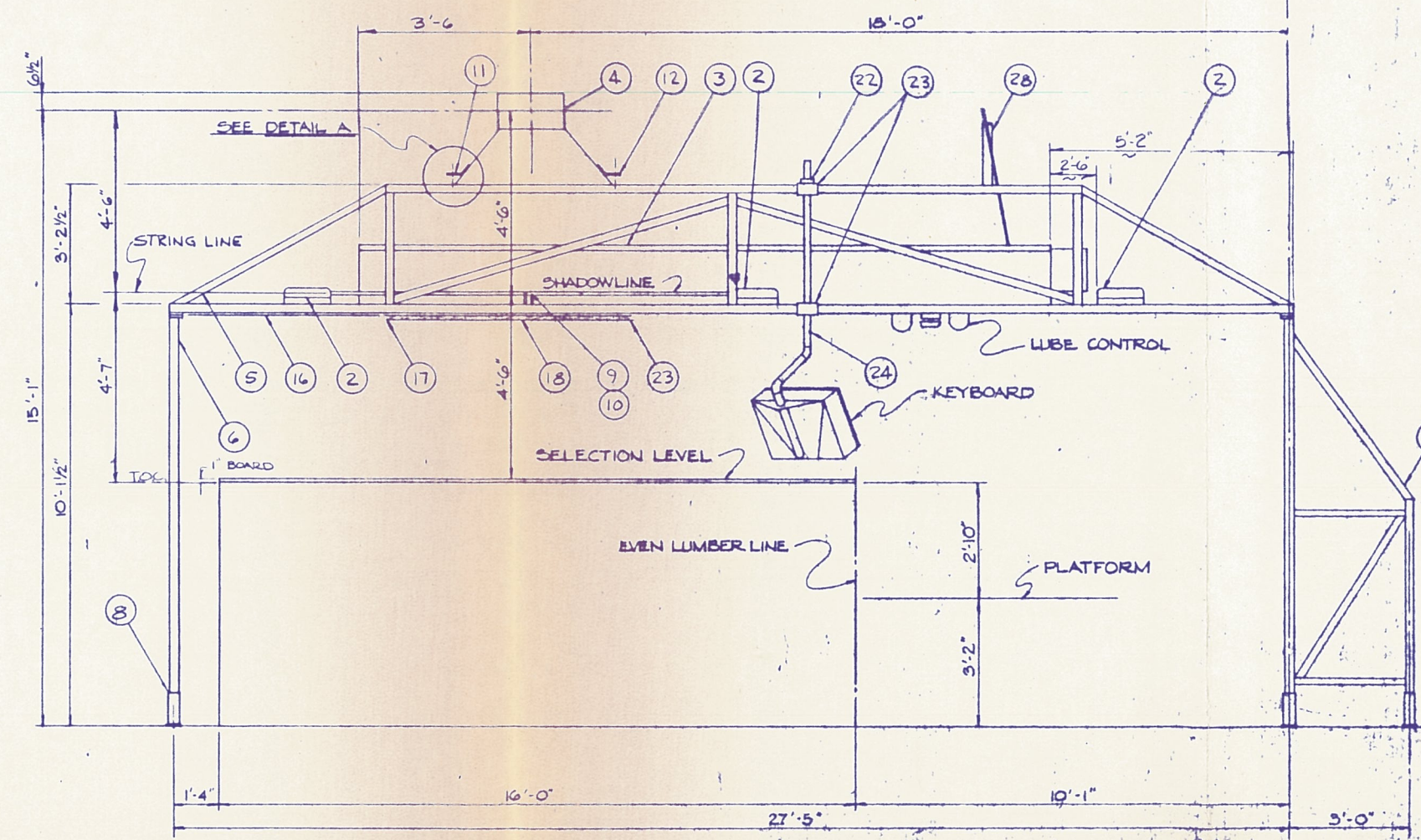
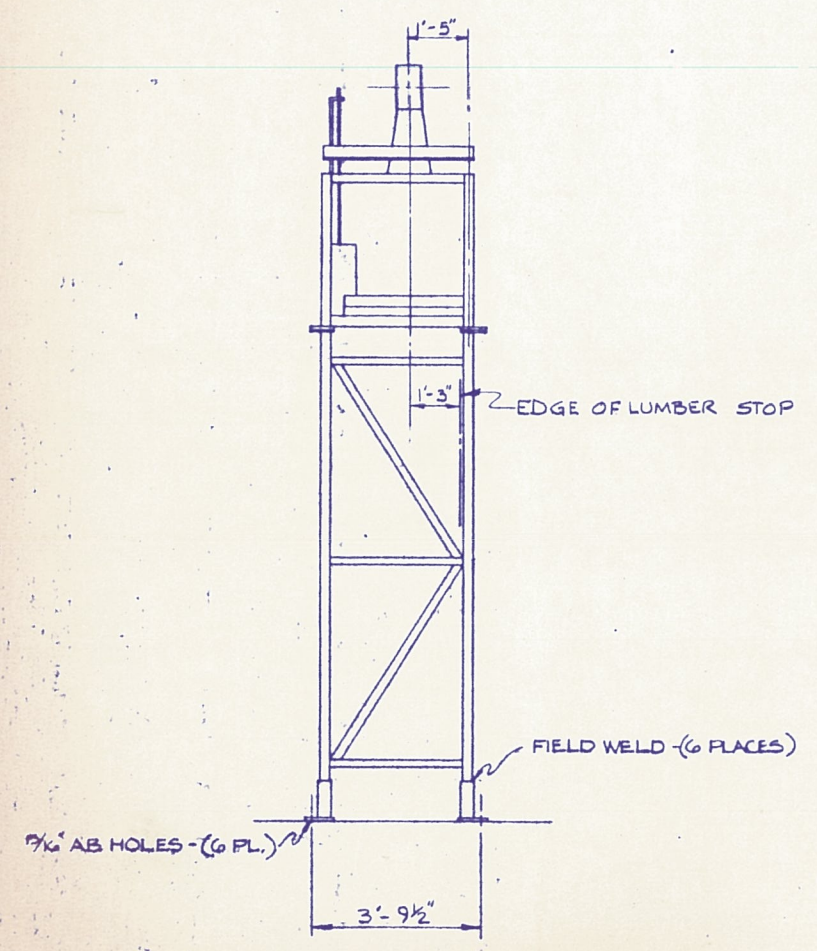
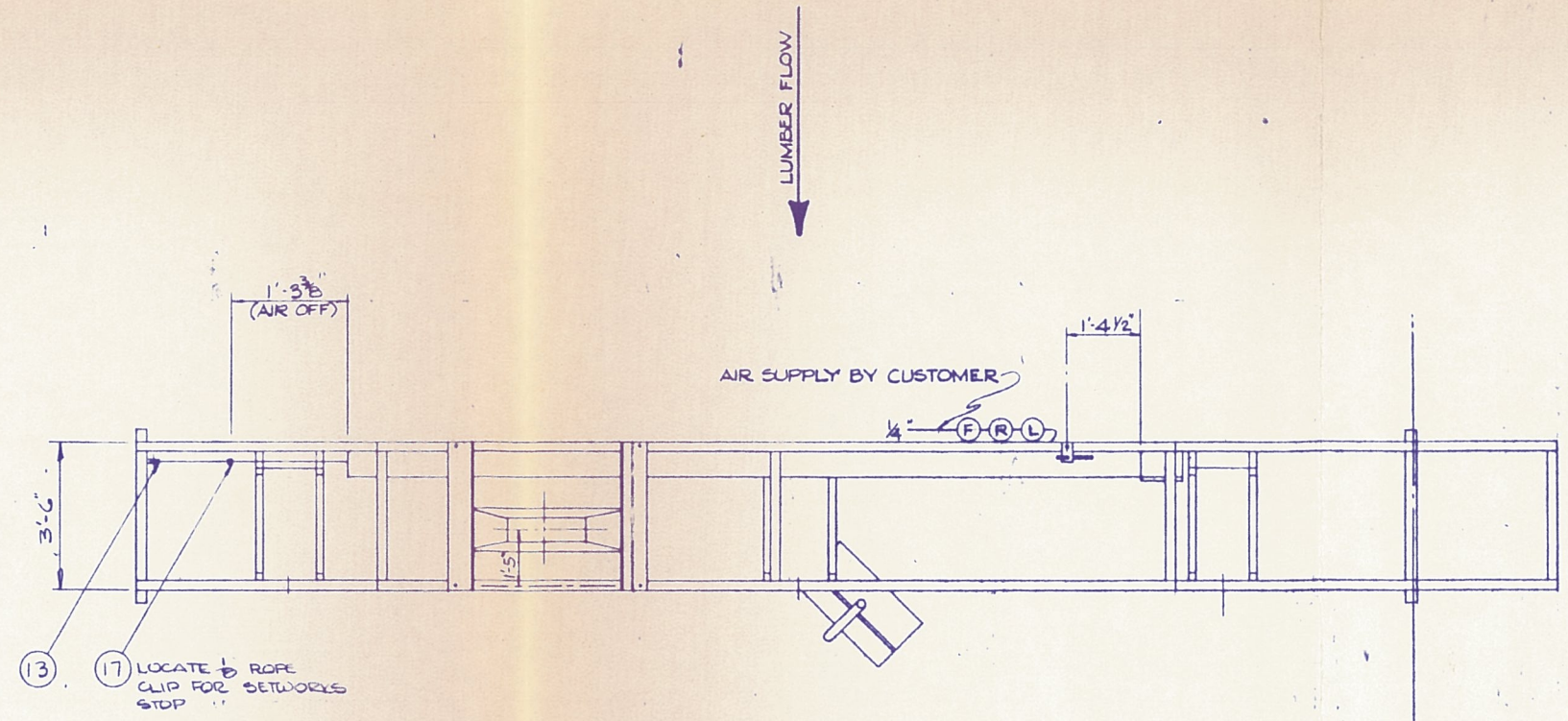
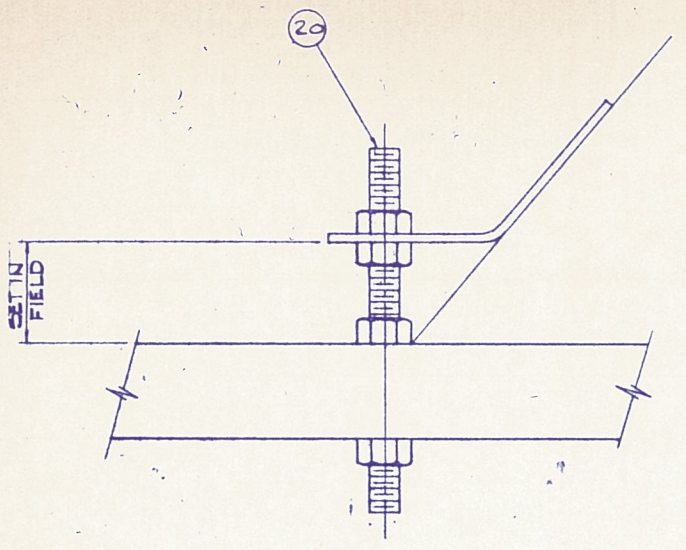


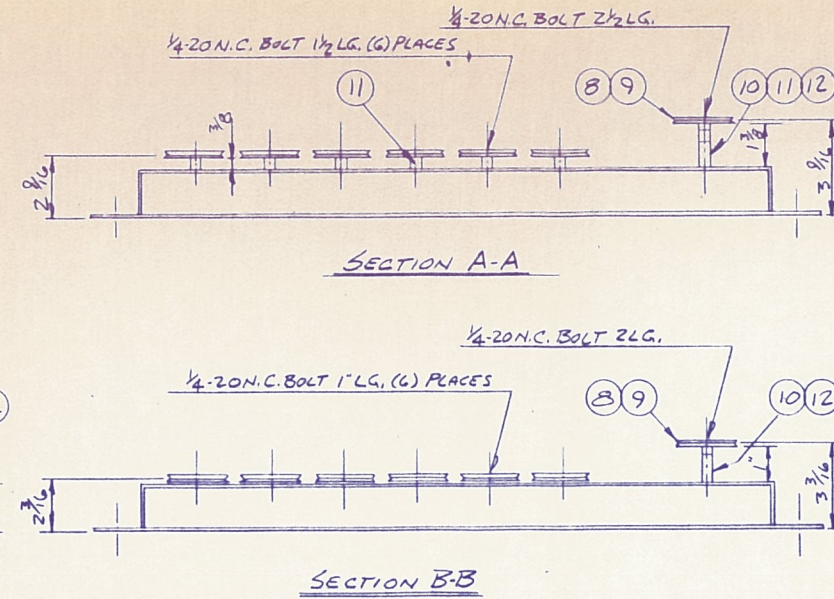
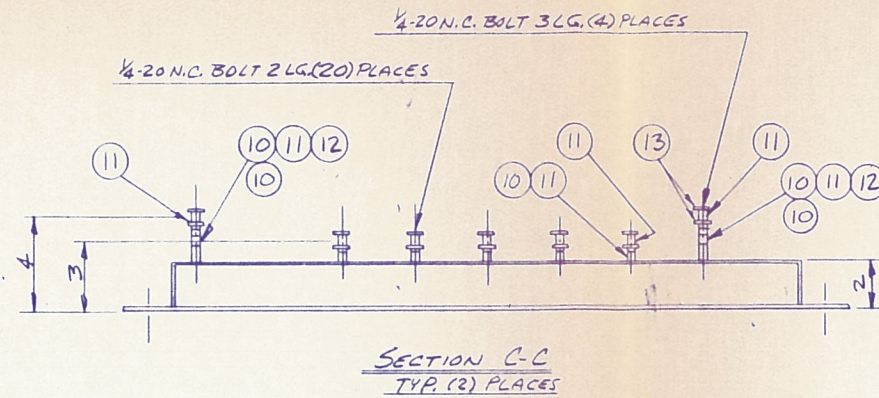
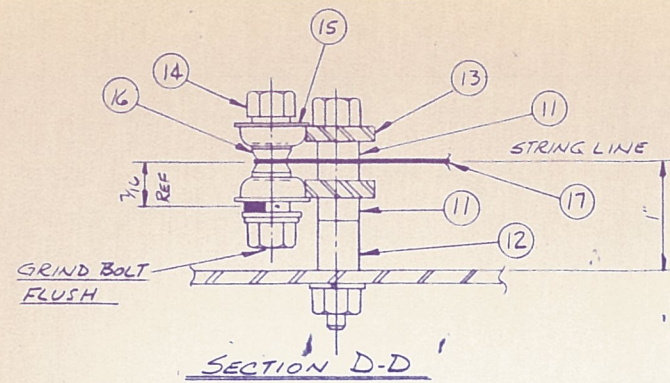
SHOP ORDER			PORTLAND IRON WORKS				PARTS LIST 24522-D	
CUSTOMER			TITLE RIPSAW SHADOWLINE ASSY. R.H. ϕ				DATE 28 FEB 86	
			5 SAW DUAL CUTTER HEAD 16' LUMBER				SHEET 1 OF 1	CODE Z6C
CK	DED.	PULL	ITEM NO.	TOTAL QTY	PART NO.	DESCRIPTION	REV.	DATE
			1	1	24522-D	SHADOWLINE ASSY.		
			2	1	24531-D	PULLEY AND CARRIAGE BASE ASSY'S. (SEE P.L. 24531-D)		
			3	1	A13136-D	SHADOWLINE SETWORKS w/8" EDGING SAVE (SEE P.L. A13136-D)		
			4	1	A5860-D	SHADOWLINE LIGHT ASSY. (SEE P.L. A5860-D)		
			5	1	24523-D	SHADOWLINE TRUSS		
			6	1	24524-B	SHADOWLINE SUPPORT #1		
			7	1	24525-B	SHADOWLINE SUPPORT #2		
			8	6	10120-B	STRUCTURE FEET.		
			9	1	24137-1-B	STRING SUPPORT		
			10	1	24137-2-B	STRING SUPPORT		
			11	1	24138-1-B	LIGHT BRACKET		
			12	1	24138-2-B	LIGHT BRACKET		
			13	1	A11215-B	CABLE PULLEY		
			14	1	11215-1-B	L 3X3X 3/16 X 2 LG.		
			15	1	11215-2-B	PULLEY w/BRG. NICE #2012		
			16	1	34-3	WIRE ROPE, 1/8 ϕ STN. STL. X 30'-0 LG.		
			17	3		WIRE ROPE CLIP, 1/8 ϕ ROPE		
			18	5	18-3	SPRING, WINKS # 851		
			19	1		EYEBOLT 1/4 SHANK		
			20	4	11005 (P/N)	THREADED ROD w/4 NUTS		
			21		11172-B	STRING RUN INFORMATION SHEET		
			22	1		SET COLLAR 2 7/16 I.D.		
			23	2	9688-B	KEYBOARD MOUNTING BRKT.		
			24	1	9691-B	KEYBOARD SUPPORT		
			25	4	11677-A	"T" HANDLES		
			26		24019-B	COMPENSATOR INSTALLATION		
			27		24020-B	SETWORKS CABLE CONNECTION DETAIL		
			28	1	9686-B	COMPENSATOR BRKT		



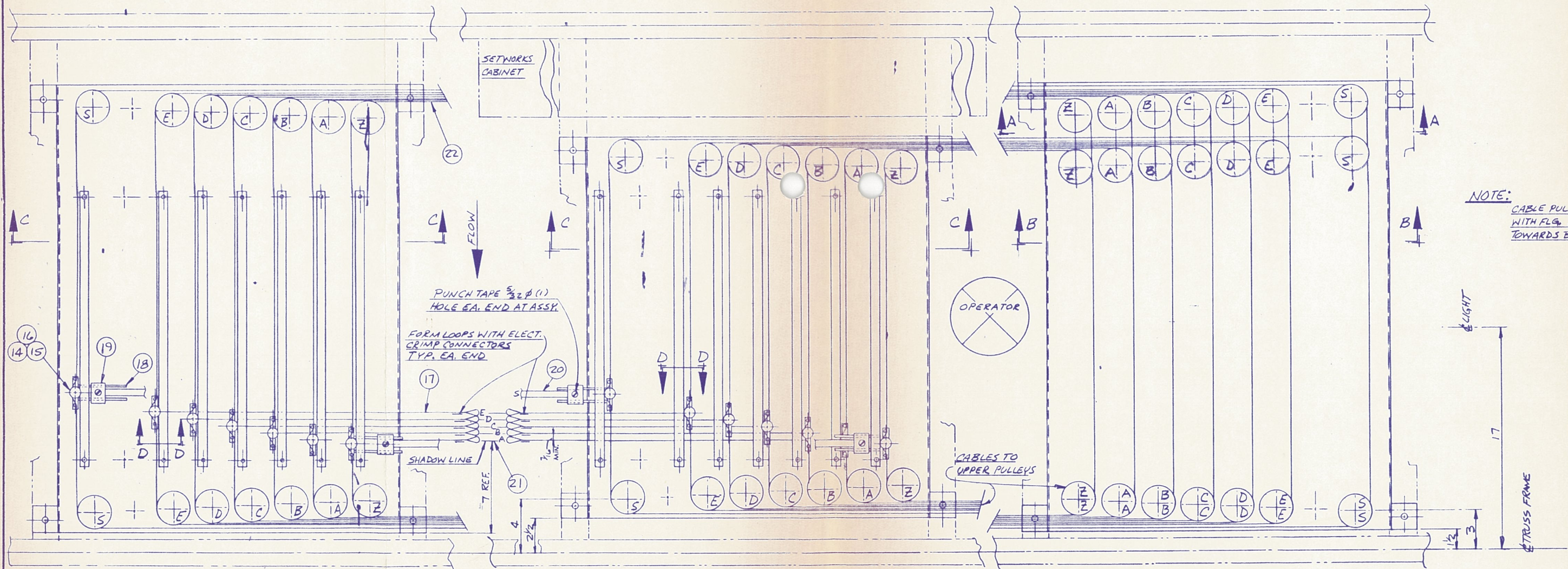
BY	DATE	REVISION	BY
MANUFACTURING TOLERANCES, UNLESS OTHERWISE STATED			
INCHES		UNLESS SHOWN OTHERWISE	
PORTLAND IRON WORKS			
PORTLAND, OREGON			
RIPSAW			
SHADOWLINE ASSEMBLY			
RH ZERO - SAW DUAL CUTTER			
STANDARD CONN. W/KEYBOARD			
26	FEB 87	REV	24522

SHOP ORDER		PORTLAND IRON WORKS	PARTS LIST 24531-D	
CUSTOMER			DATE 3 MARCH 86	
		TITLE	CODE 260	
		SHADOWLINE PULLEY & CARRIAGE BASE ASSEM. R.H. ZERO -SAW DUAL CUTTER HEAD		

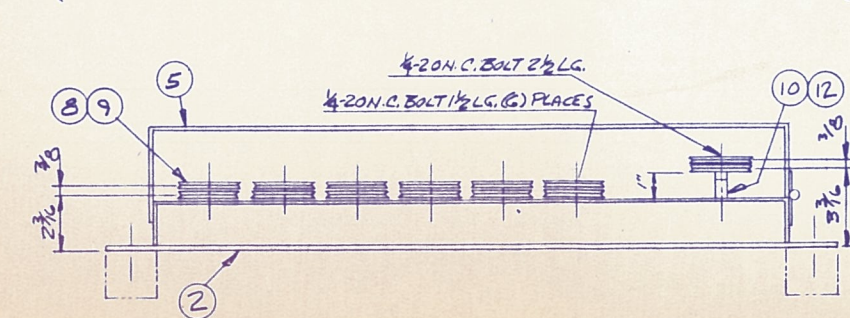
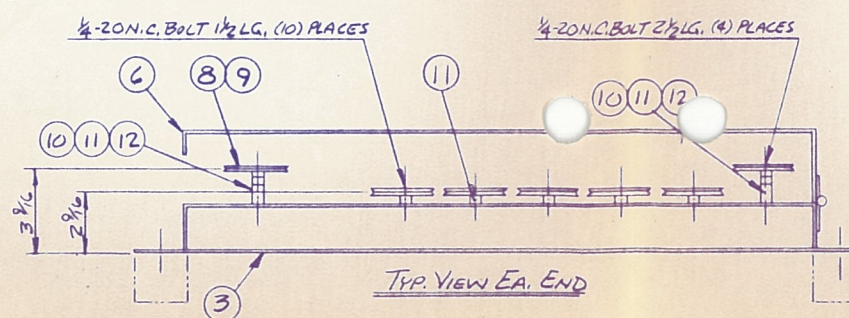
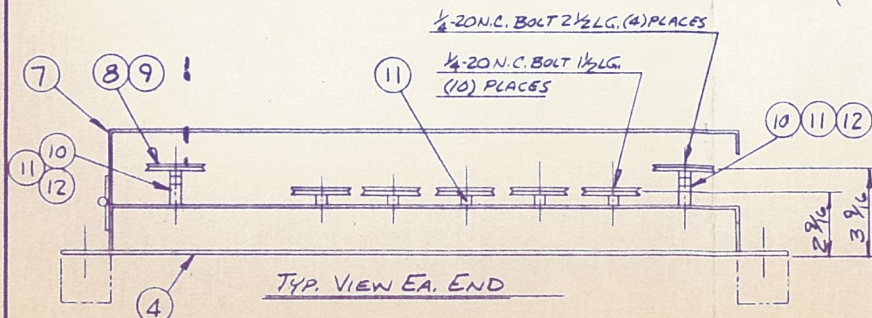
CK	DED.	PULL	ITEM NO.	TOTAL QTY	PART NO.	DESCRIPTION	REV.	DATE
			1	1	24531-D	PULLEY & CARRIAGE BASE ASSEM.		ZERO
			2	1	24534-1-D	PULLEY & CARRIAGE BASE		
			3	1	24534-2-D	PULLEY & CARRIAGE BASE		
			4	1	24534-3-D	PULLEY & CARRIAGE BASE		
			5	1	24536-1-D	PULLEY & CARRIAGE COVER		
			6	1	24536-2-D	PULLEY & CARRIAGE COVER		
			7	1	24536-3-D	PULLEY & CARRIAGE COVER		
			8	56	24133-B	2 1/2" DIA. SHADOWLINE PULLEY		
S			9	56		BRG. SCHATZ AF1622		
S			10	47	8630-1-B	SPACER 1/2" LG.		
S			11	91	8630-2-B	SPACER 3/8" LG.		
S			12	19	8630-3-B	SPACER 3/4" LG.		
S			13	28	8646-B	CARRIAGE BAR		
S			14	14	A-8647-B	STRING CARRIAGE		
S			15	28		BRG. SCHATZ AF1622		
S			16	14	8630-4-B	V-GROOVE SPACER		
			17	10		LEADER, COPPER WIRE 14 GA. x 30' LG.		
S			18	8	8661-B	TAPE, ANCHOR		
S			19	4	8658-B	TAPE, CLAMP		
			20	2		TAPE, STL., 1/2" WIDE x 13'-6" LG.		
			21	1		NYLON FISH LEADER, 210 TEST, x 72" LG.		
S			22	1		WIRE CABLE, 3/64" DIA. 7 x 7 STN.		
						STL. MACWHYTE PREFORMED		
						AIRCRAFT CABLE x LG.		



SYM.	NO. REQD.	DESCRIPTION	DWG. NO.
2	1	PULLEY & CARRIAGE BASE	2453A-1-D
3	1	"	2453A-2-D
4	1	"	2453A-3-D
5	1	PULLEY & CARRIAGE COVER	2453L-1-D
6	1	"	2453L-2-D
7	1	"	2453L-3-D
8	56	2 1/2" Ø SHADOWLINE PULLEY	24133-B
9	56	BRG., SCHATZ AF1622	
10	47	SPACER 1/4 LG.	8630-1-B
11	91	SPACER 3/8 LG.	8630-2-B
12	19	SPACER 3/4 LG.	8630-3-B
13	28	CARRIAGE GUIDE BAR	8646-B
14	14	STRING CARRIAGE	A-8647-B
15	28	BRG., SCHATZ AF1622	
16	14	V-GROOVE SPACER	8630-4-B
17	10	LEADER, COPPER WIRE 1AGA X 25' LG.	
18	8	TAPE, ANCHOR	8661-B
19	4	TAPE, CLAMP	8658-B
20	2	TAPE STL. 1/2" WIDEX 13' LG.	
21	1	NYLON FISH LEADER 210 TEST	72' OLG.
22	1	WIRE CABLE, 3/4" X 7 X 7 S.S. MACWHYTE PREFORMED AIRCRAFT CABLE X 600' LG.	

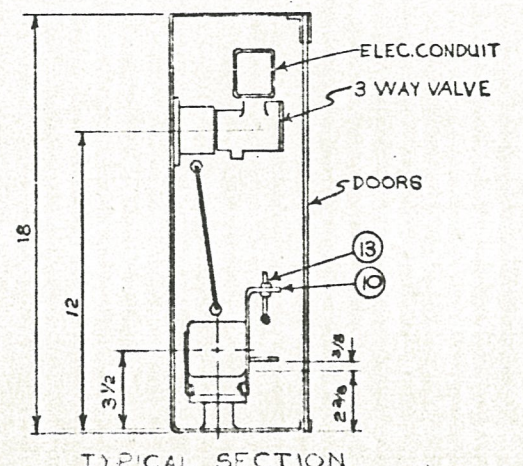
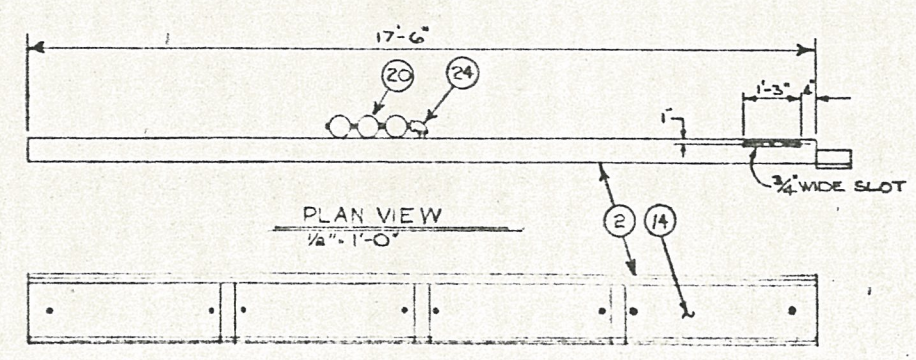
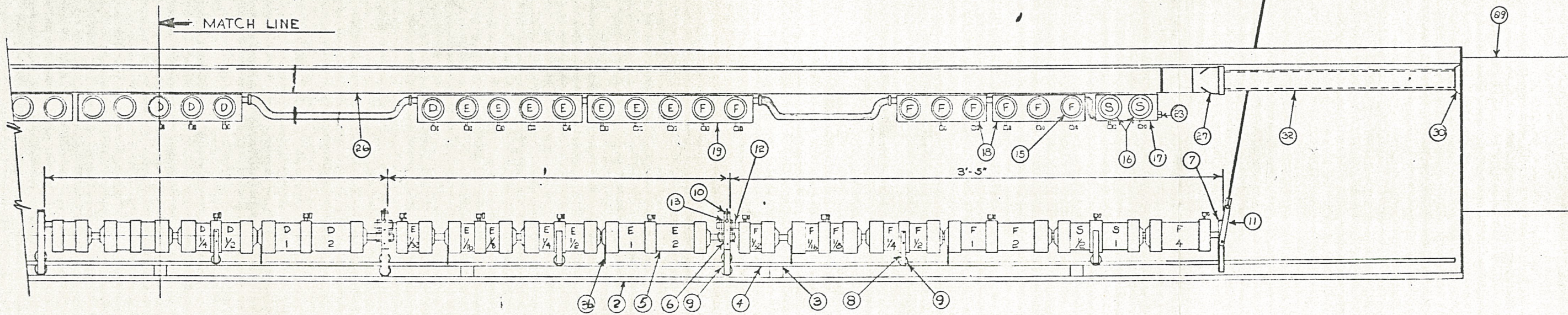
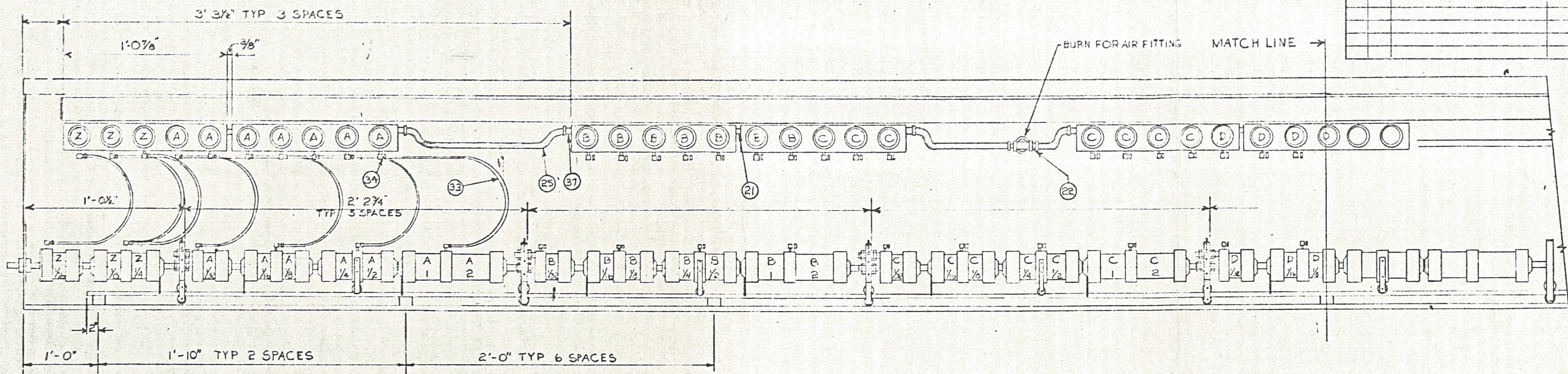


NOTE:
CABLE PULLEY TO BE INSTALLED WITH FLG. SIDE OF BRG'S. TOWARDS BASE TYP. ALL PLACES.



SYM.	DATE	REVISION	BY
MANUFACTURING TOLERANCES, UNLESS OTHERWISE STATED			
INCHES UNDER 25'-0" ±.015			
25'-0" & OVER ±.030			
PORTLAND IRON WORKS			
BEND, OREGON			
SHADOWLINE PULLEY & CARRIAGE BASE ASS'YS. R.H.Ø			
5-SAW DUAL CUTTER HEAD			
DATE 28/FEB/66	BY R.H.Ø	DRAWING NUMBER 24531-D	SCALE 3"=1'-0"

SYM.	NO.	DESCRIPTION	DATE



B	5-22	REVISED - SEE RELEASED LIST	4/24
A	5-17	F4 WAS F3	7/7
SYM.	DATE	REVISION	BY
MANUFACTURING TOLERANCES UNLESS OTHERWISE STATED			
INCHES		UNDER 24" - .015"	24" & OVER
PORTLAND IRON WORKS			
PORTLAND, OREGON			
RIPSAW			
SHADOWLINE NETWORKS			
5 SAW, 8 ES, RH ZERO			
SPECIAL LINEAR TYP HUB			
SYM.	DATE	REVISION	BY
AK	5-17	3	AK
A13136D			

SHOP ORDER

PORTLAND IRON WORKS

PARTS LIST A5860-D

CUSTOMER

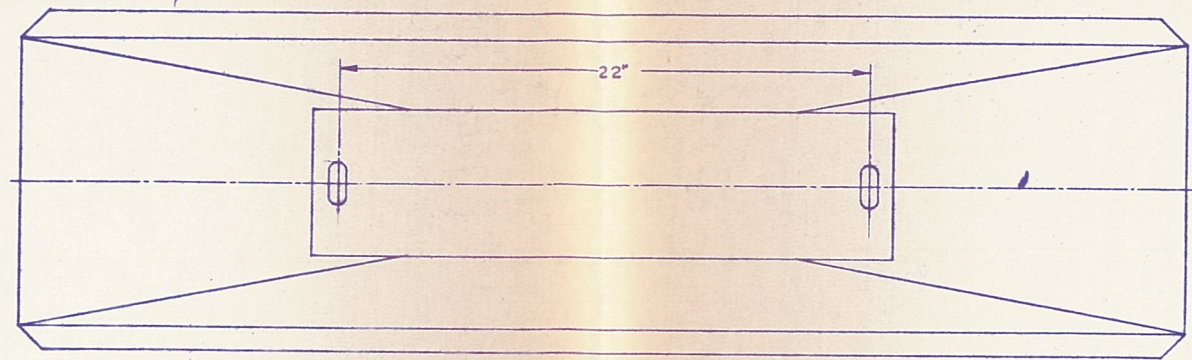
TITLE

SHADOWLINE LIGHT ASSEMBLY

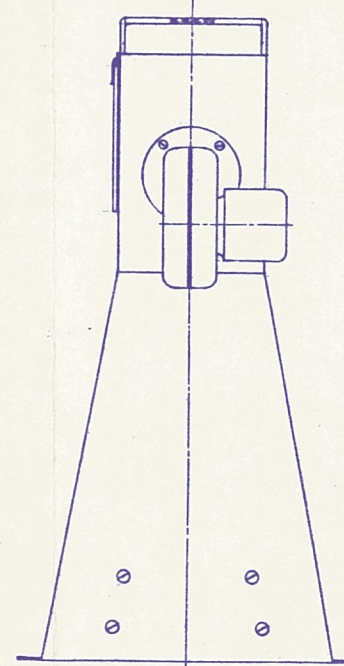
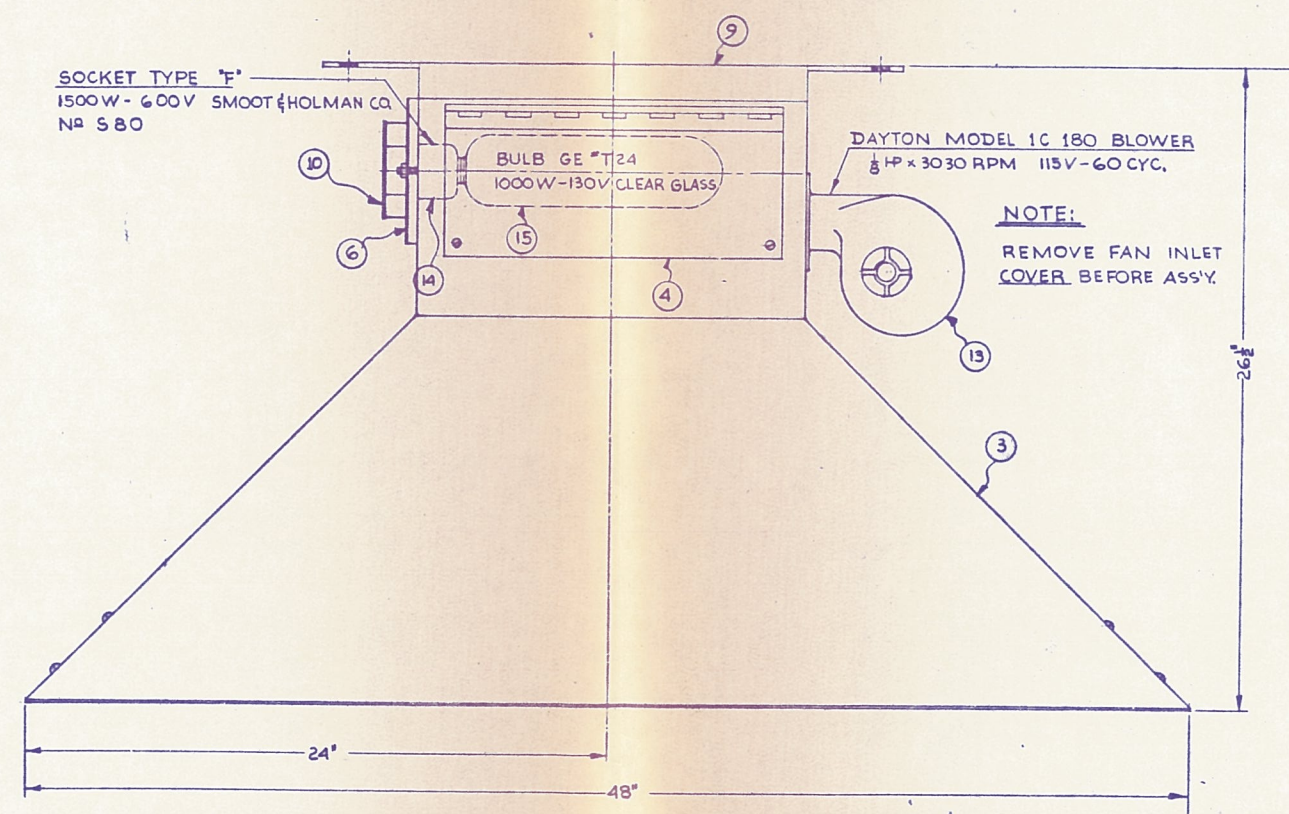
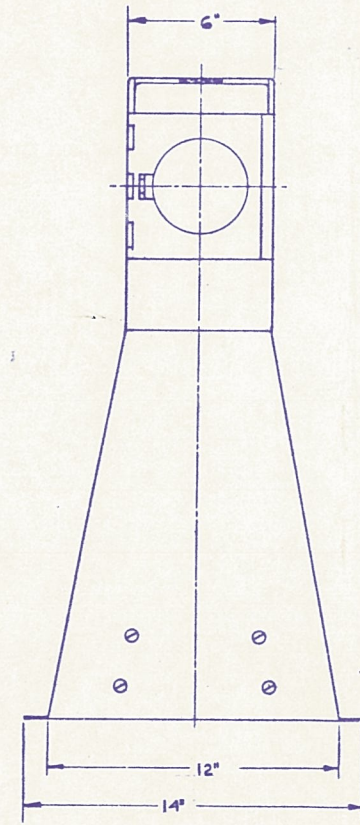
DATE 10-OCT. 1983

SHEET 1 OF 1 CODE 260

STOCK	DED.	PULL	ITEM NO.	TOTAL QTY	PART NO.	DESCRIPTION	REV.	DATE
			1	1	A5860-D	SHADOWLIGHT UNIT ASSEMBLY		
			2	1	5861-D	LIGHT UNIT DETAIL		
			3	1	5861-1-D	HOOD		
			4	1	5861-2-D	ACCESS DOOR		
			5	1		BUTT HINGE 5/8" x 5/8" x 14" LG. TIGHT PIN		
			6	1	5861-3-D	LIGHT HOLDER		
			7	1		BUTT HINGE 3/4" x 3/4" x 6" LG. TIGHT PIN		
			8	2	5861-4-D	STIFFENER PLATE		
			9	1	10953-B	SUPPORT PLATE		
			10	1		JUNCTION BOX (NORTH COAST - 40 E 1/2)		
						APPLETON EXT. RING		
			11	1		METAL HOSE, SEALTITE TYPE V.A. ANACONDA		
						3/8" x 2"		
			12	1		UNION ELBOW APPLETON #ST-38, 3/8" SIZE		
			13	1		1/125 HP x 3030 RPM BLOWER, 115V - 60 CYCLE		
						DAYTON, MODEL 1C 180		
			14	1		SOCKET TYPE F 1500 W, 600V, ABOLITE #RS 7006		
			15	1	5861-15-D	SHADOWLIGHT BULB, 1000W - 130V, CLEAR GLASS,		
						HORIZONTAL BASE, G.E. #T24		

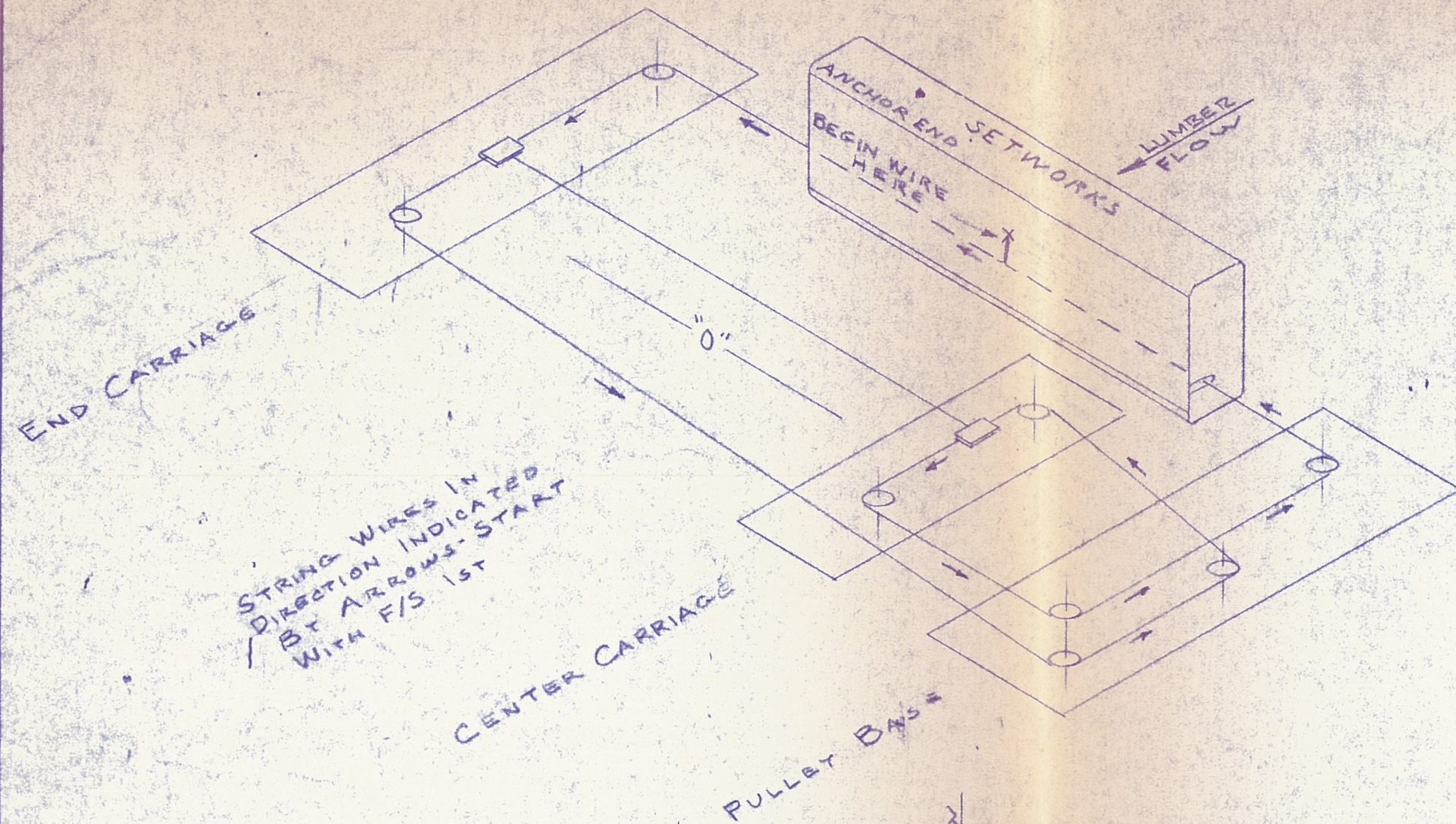


NOTE:
 PAINT EXTERIOR WITH HEAT
 RESISTANT ALUMINIUM PAINT
CAUTION:
 DO NOT PAINT INTERIOR



A	4-4-68	REDRAWN - SAME NO	AM.
SYM.	DATE	REVISION	BY
PORTLAND IRON WORKS PORTLAND, OREGON			
SHADOW LINE LIGHT ASSEMBLY			
DATE	BY	NO.	DRAWING NUMBER
4-4-68	AM.	260	A 5860-D
SCALE	3" = 1'-0"	4	

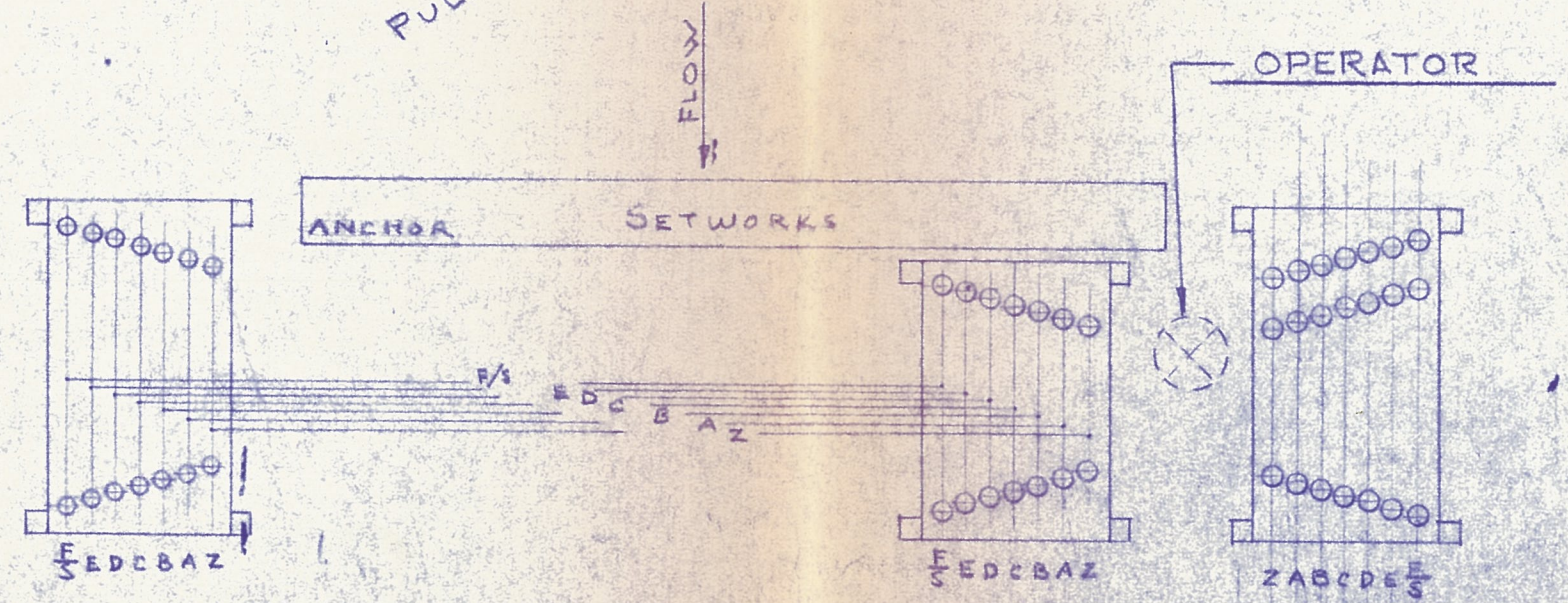
SYM.	NO. REQD.	DESCRIPTION	DWG. NO.



STRING WIRES IN
DIRECTION INDICATED
BY ARROWS-START
WITH F/S 1ST

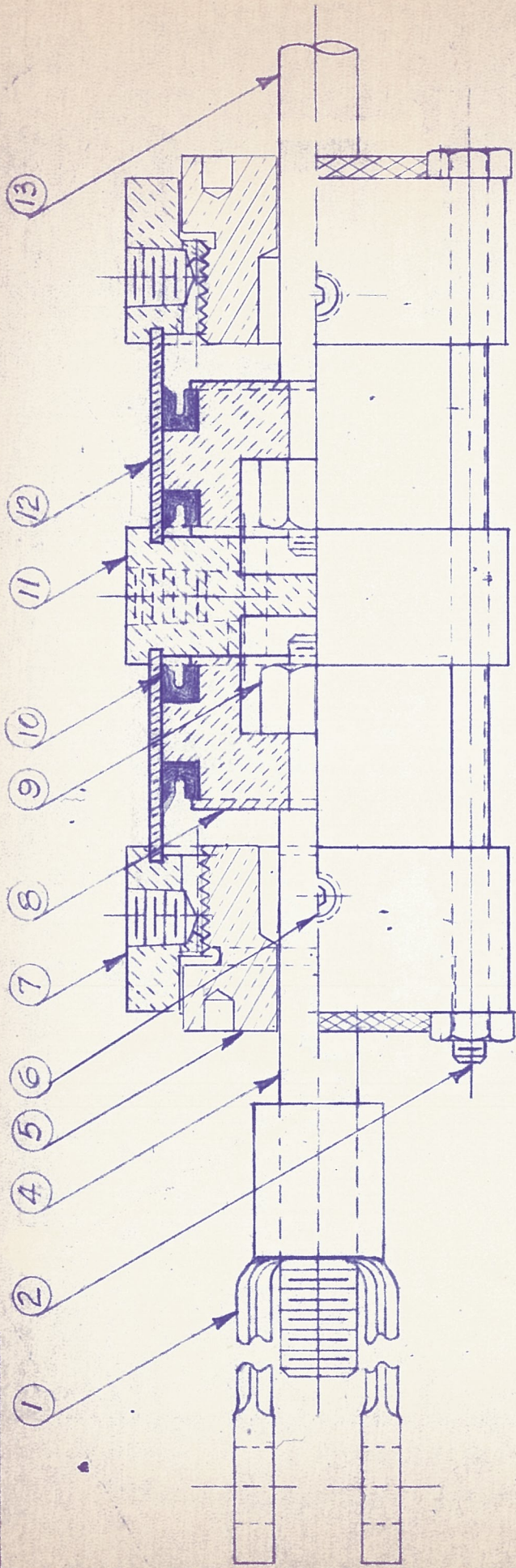
CENTER CARRIAGE

PULLEY BASE



SYM.	DATE	REVISION	BY
PORTLAND IRON WORKS PORTLAND, OREGON			
SHADOWWIRE STRING RUN INFO RH ZERO			
DATE	8-16-65	DR. AK 260	DRAWING NUMBER
SCALE	1	3	A11172-B

A16603-A



NO.	DESCRIPTION	P/N
1	CLEVIS 1/2 N.F.	7411
2	TIE ROD 1/4 N.G. WITH NUT &	7410
3		-
4	PISTON ROD FOR SINGLE CYLINDER	7401
5	GLAND	15797-B
6	5/16 x 1/4 SOCKET SETSCREW GLAND LOCK	15796-B
7	HEAD	7403
8	PISTON	-
9	PISTON ROD LOCK NUT 3/8 N.F.	7896
10	PISTON PACKING "U" CUP	7402
11	CENTER HEAD	7409
12	CYLINDER TUBE	7400
13	DUAL PISTON ROD	'

PORTLAND IRON WORKS
 PORTLAND, OREGON

2" INCREMENT CYLINDER PARTS
 ADJUSTABLE GLAND MODEL

DATE 9-21-73 DR CHET

SCALE FULL

DRAWING NUMBER

A16603-A