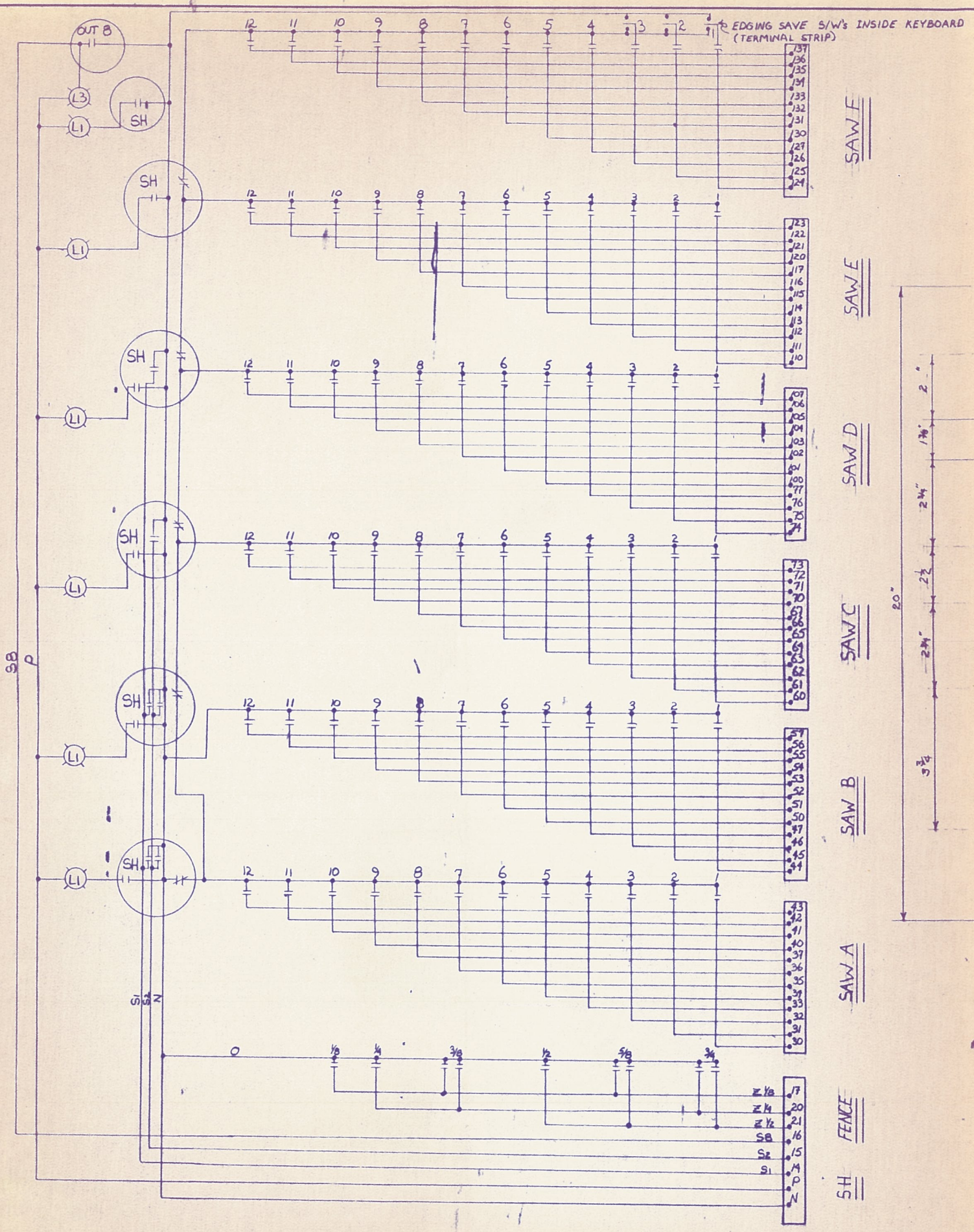
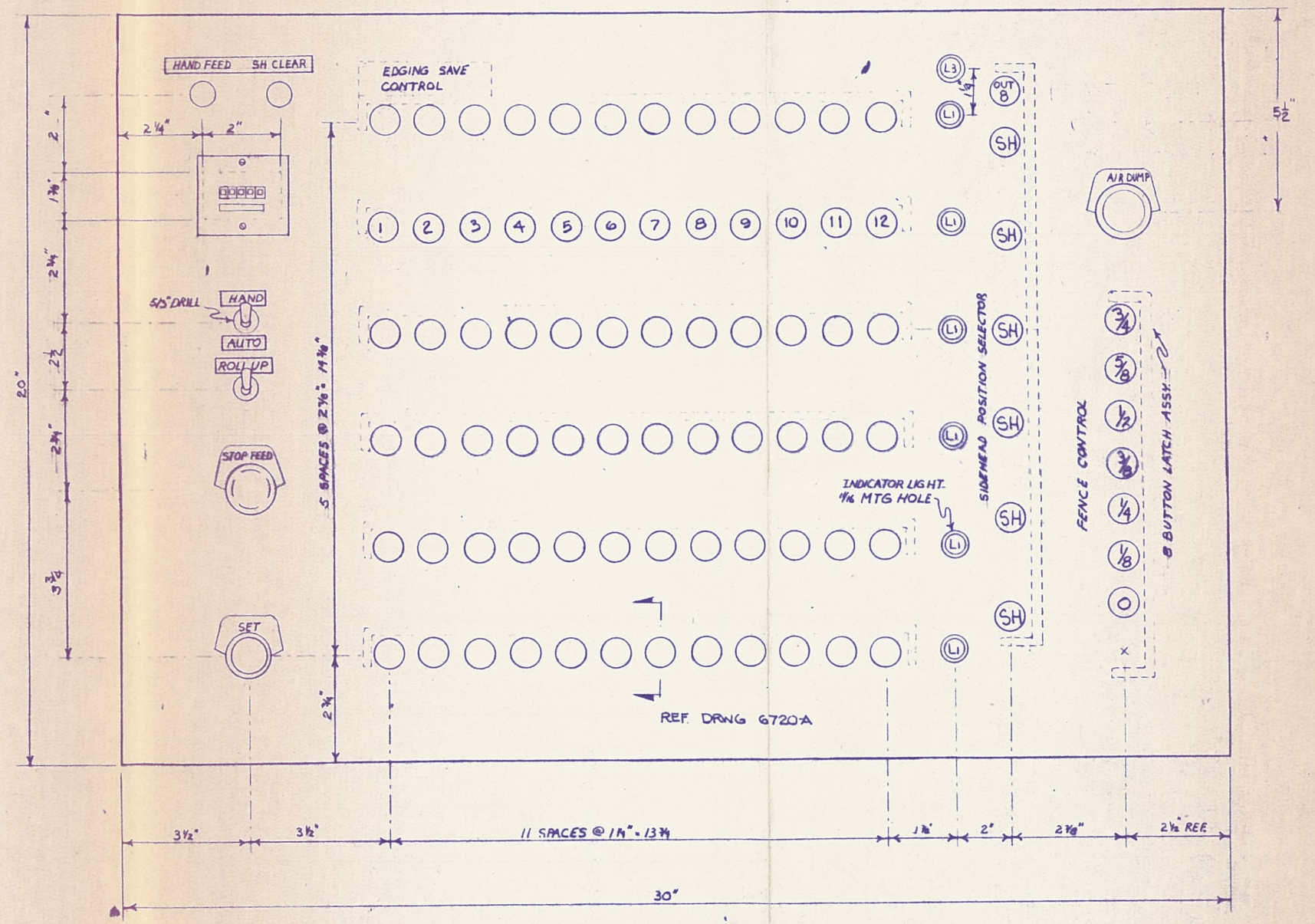


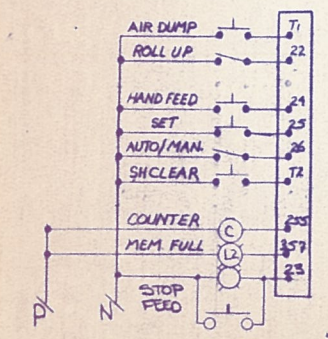
SHOP ORDER			PORTLAND IRON WORKS				PARTS LIST 24553D	
CUSTOMER			TITLE CONTROL PANEL				DATE February 19, 1986	
K DED. PULL			ITEM NO.	TOTAL QTY	PART NO.	DESCRIPTION	REV.	DATE
			1	1	24553 D	Panel Layout Assy.		
P			2	1		Cabinet, Hoffman A-603610LP		
P			3	1		Panel, Hoffman A-60P36		
P			4	1		Floor Stand, Hoffman A-FK1210		
P			5	1		CRU/Programmer, G.E. CPU301A		
P			6	2		Power Supply Unit, G.E. PWR300A		
P			7	2		Base Unit, G.E. CHS308A		
P			8	7		24 VDC Input, G.E. MDL301A		
P			9	8		24 VDC Output, G.E. MDL352A		
P			10	1		I/O Expander Cable CBL304A G.E.		
P			11	1		Power Supply, KEPCO RBX24-25K		
P			12	1		Box Bud. RC-11100		
P			13	7		Toggle Switch, McGill, SPST		
P			14	1		P.B., A.B. 800T-B6A		
P			15	1		Legend Pl, Sq-D KN-200 (engraved "Select")		
P			16	1		Wiring Duct, Panduit E - 3x3 - LG - 9		
			17	1		Duct Cover, Panduit C-3-LG-9		
P			18	258		Terminals, SQ-D GM-3		
P			19	2		Fuse Block, SQ-D GF-6		
P			20	1		Fuse, 10 Amp. (120V)		
P			21	1		Fuse, 30 Amp. (24V)		
P			22	2		End Barrier, SQ-D GF-6B		
P			23	4		End Barrier, SQ-D GM-3B		
P			24	2		Jumper, SQ-D GH-70		
P			25	3		Jumper, SQ-D GH-71		
P			26	1		Mounting Channel, SQ-D GH-72		
P			27	3		P.B. Operator, Microswitch 6A49		
P			28	3		Switch, Microswitch 2D100		
P			29	1		Cassette Loader		
P			30	4		End Clamp, SQ-D GH-11		
P			31	1		Cooling Fan, Hoffman A-PA4XFN		
P			32	1		Filter/Grill, Hoffman A-EXGR4		
			33	1		Wiring Duct, Panduit E 1y1-LG-4'		
			34	1		Duct Cover, Panduit C-1-LG-4'		
			35	1		Duplex Outlet, Hubble #5262- 6RY		
			36	1		Bell Box, Bell #251-L		
			37	1		Cover Plate, Bell #223		



SYM.	NO. REQD.	DESCRIPTION	DWG. NO.
1	6	L1, SYLVANIA PILOT LIGHT 30099 GREEN	
2	1	L2, SYLVANIA PILOT LIGHT 30099 YELLOW	
3	2	L3, SYLVANIA PILOT LIGHT 30099 RED	
4	9	LIGHT BULBS, #28PSB	
5	2	SEL. S/W, TOGGLE SPDT	
6	1	COUNTER, VEEDER ROOT #3895-216	
7	1	SET BUTTON, #800T-D2D1 A.B	
8	1	AIR DUMP BUTTON A.B #800T-FX12A	
9	1	STOP FEED BUTTON A.B #800T-FX21A	
10	3	LEGEND PLATES, SA-D #KN-300	

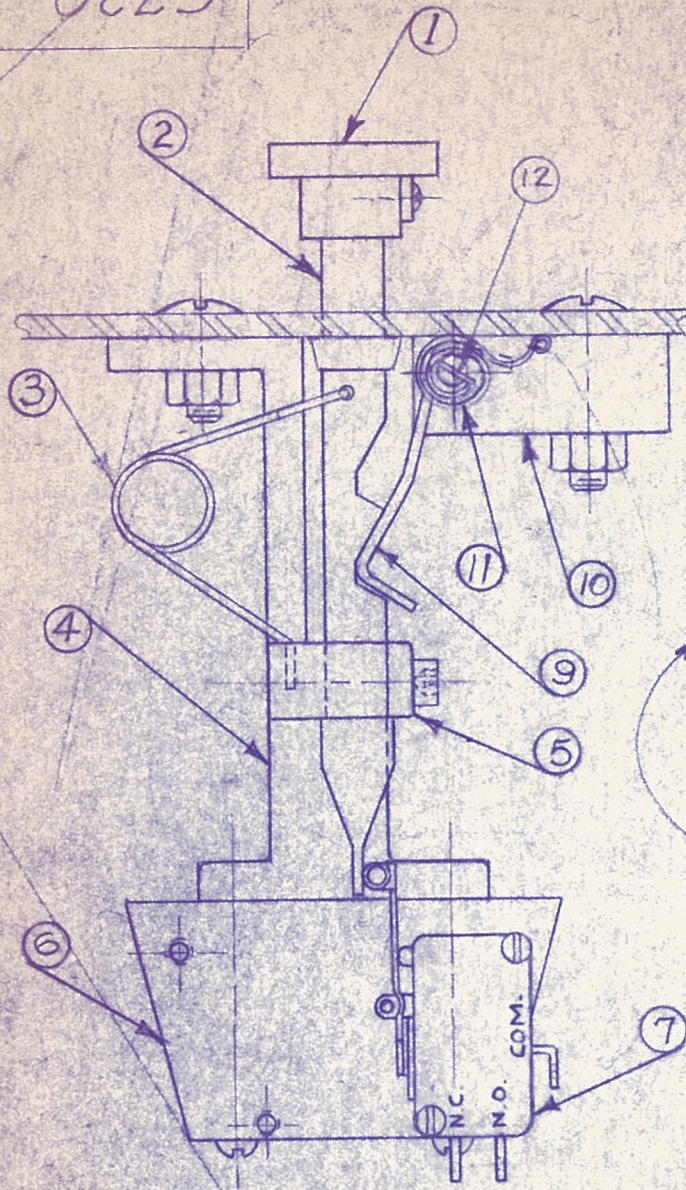


KEYBOARD PLAN VIEW



SYM.	DATE	REVISION	BY
MANUFACTURING TOLERANCES, UNLESS OTHERWISE STATED			
INCHES UNDER .001" .001" & OVER			
PORTLAND IRON WORKS			
BEND, OREGON			
RIPSAW ELECTRICAL CONTROL			
KEYBOARD ASSY - WIRING DIAGRAM			
R4 ZERO		5 SAW MACHINE	
GE SERIES THREE PLC 24VDC			
DATE	2/24/86	BY	EAB 206
SCALE	6" = 1"	NO.	9 24511

6720-A



NO.	DESCRIPTION
<u>KEY ASSEMBLY</u>	
1	PUSH BUTTON
2	PUSH BUTTON KEY WITH SPRING
3	PUSH BUTTON SPRING ONLY
4	KEY FRAME
5	KEY FRAME BAR SEE B24626
6	SWITCH BLOCK
7	MICRO SWITCH #V3-III-DB
9	LATCH BAR (SPECIFY LENGTH)
10	LATCH BAR BEARING BLOCK
11	LATCH BAR SPRING
12	LATCH BAR PIVOT PIN ^{DWG} 24625

SEE DWG 24624

END ELEV.

PORTLAND IRON WORKS
PORTLAND, OREGON

ELECTRIC CONTROL

PUSH BUTTON KEYBOARD PARTS
FOR MODEL LK-1 KEYBOARD

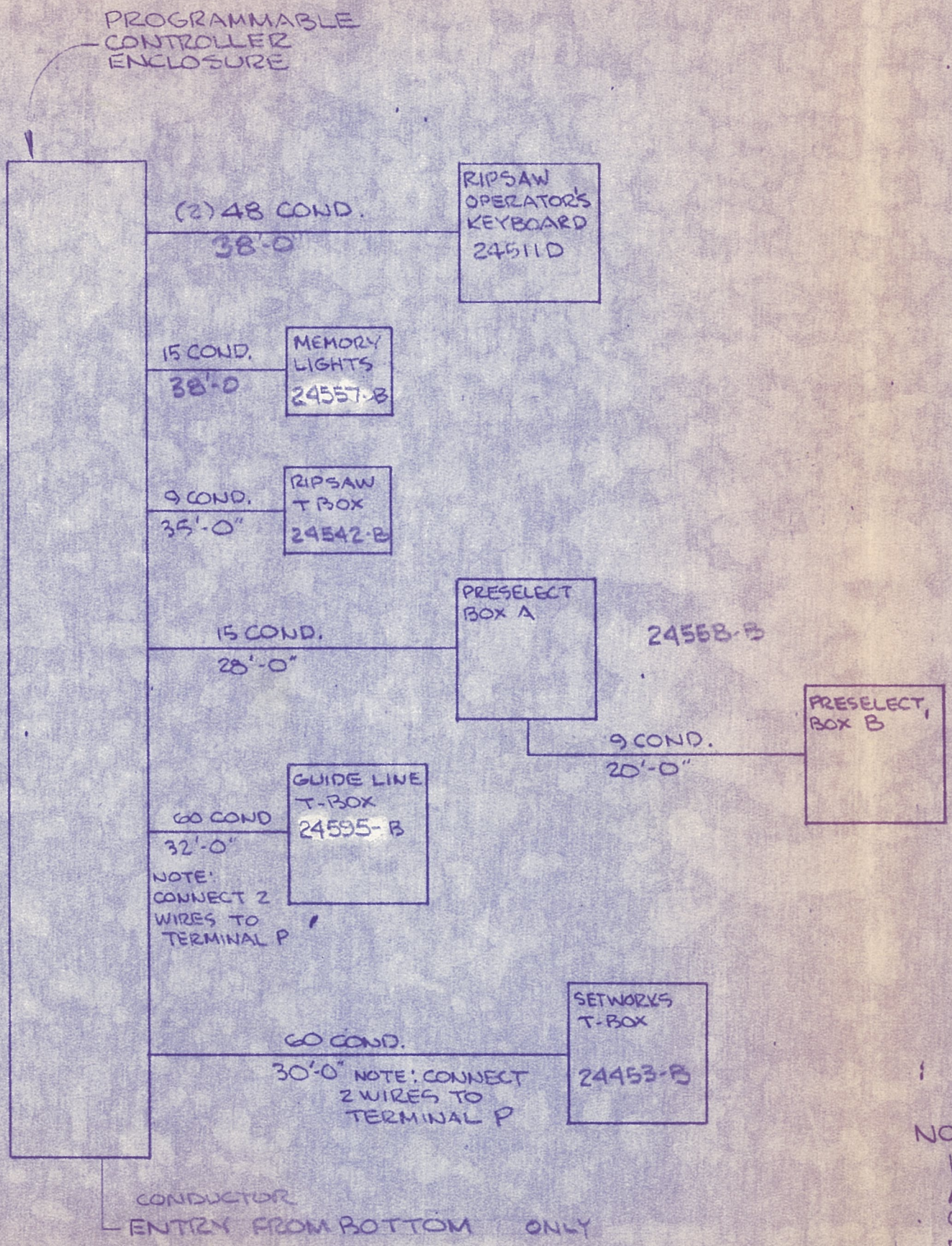
REV B ADDED LATCH BAR PIVOT PIN
11/18/58
REV A DELETE #8 MICRO JV-20 - CHG 7, WAS MICRO PS-32
2-18-67 NEW #7 INTERCHANGEABLE # REPLACES OLD #7 & #8

DATE 9-24-63 DR. H.M.G.
SCALE FULL CK. DRAWING NUMBER 6720 - A

PRIMARY SPEED 15

6720-A

SYM.	NO. REQ'D.	DESCRIPTION	DWG. NO.



NOTES:
 115 VAC SUPPLIED BY CUST.
 ALL WIRES 18GA UNLESS OTHERWISE NOTED.
 REF TO T-BOX WIRING FOR SPECIFIC TERMINALS

SYM.	DATE	REVISION	BY

MANUFACTURING TOLERANCES, UNLESS OTHERWISE STATED

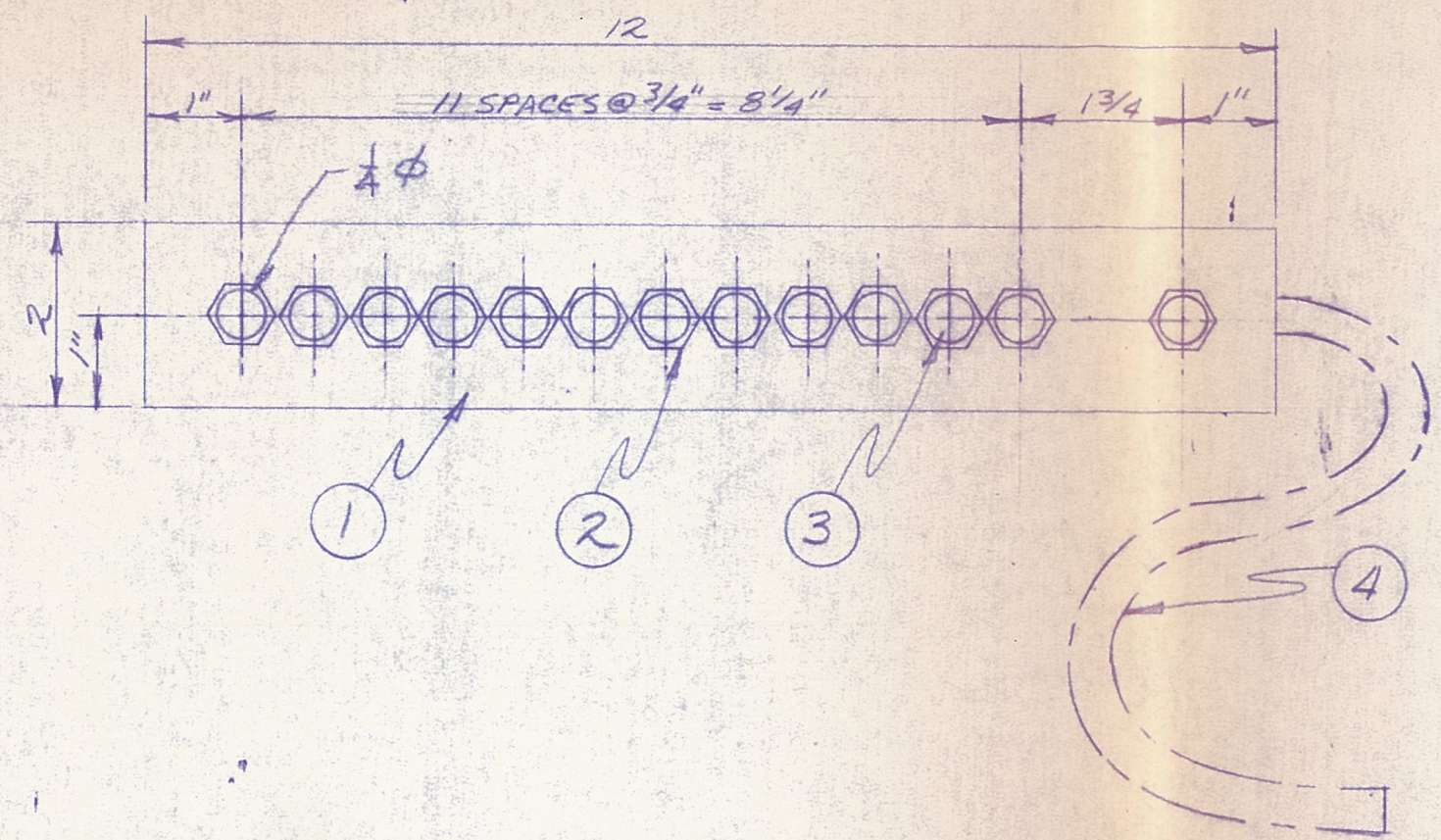
INCHES	UNDER 25'-0"	25'-0" & OVER
+ 1/64	+ 1/8	+ 1/4
- 1/64	- 1/8	- 1/4

PORTLAND IRON WORKS
 PORTLAND, OREGON

RIPS AW INTERPANEL WIRING

HARRIS OF PENDLETON

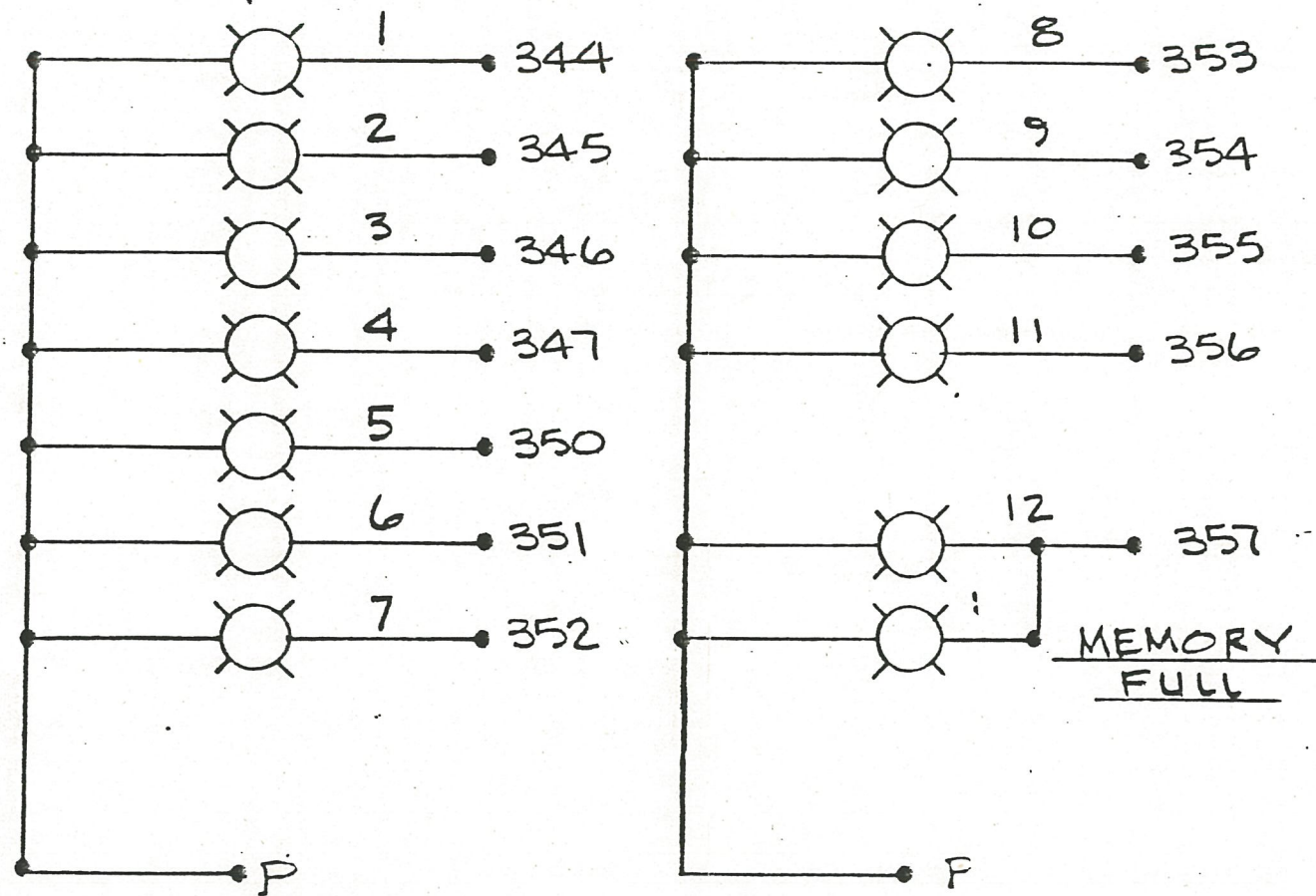
DATE 14 MAR 86	DR. NORM 206	DRAWING NUMBER
SCALE ~	CK. 10	24555 B



SYM.	NO. REQ'D.	DESCRIPTION	DWG. NO.
1	1	BUD BOX # CU-3014 -A	
2	13	QLP 1298-01 SOCKETS	
3	13	T 1 3/4 LED'S	
4	1	BELDEN 8468 15 COND 40ST	
	13	1.5 KR 1/2 W RESISTORS	

SYM.	DATE	REVISION	BY
MANUFACTURING TOLERANCES, UNLESS OTHERWISE STATED INCHES UNDER 25'-0" 25'-0" & OVER $\begin{matrix} + \\ - \end{matrix} \frac{1}{64}$ $\begin{matrix} + \\ - \end{matrix} \frac{1}{8}$ $\begin{matrix} + \\ - \end{matrix} \frac{1}{4}$			
PORTLAND IRON WORKS PORTLAND, OREGON			
<i>ELECTRICAL CONTROL</i>			
<i>12-STA RIPS AW READOUT</i>			
DATE	9/5/85	DR.	115
SCALE	1/2	CK	WFS 4
DRAWING NUMBER			24500 B

SYM.	NO. REQ'D.	DESCRIPTION	DWG. NO.



SYM.	DATE	REVISION	BY

MANUFACTURING TOLERANCES, UNLESS OTHERWISE STATED

INCHES	UNDER 25'-0"	25'-0" & OVER
+1/64	+1/8	+1/4
-0	-0	-0

PORTLAND IRON WORKS
PORTLAND, OREGON

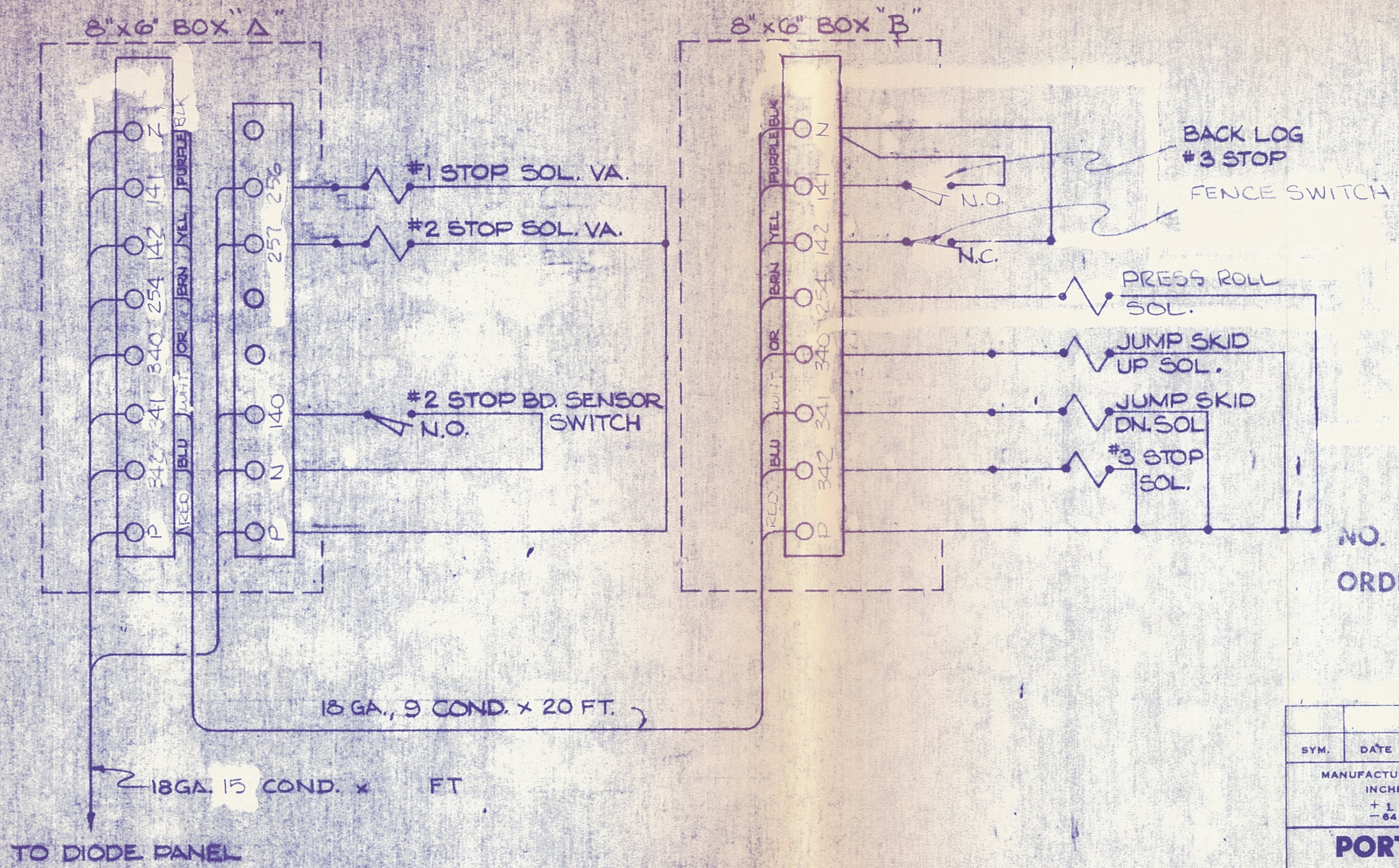
MEMORY LITE WIRING

DATE	DR	NO.	DRAWING NUMBER
13 MAR 86	NORM	115	24557 B

SCALE — CK. 5

DR 16 24496

SYM.	NO. REQD.	DESCRIPTION	DWG. NO.



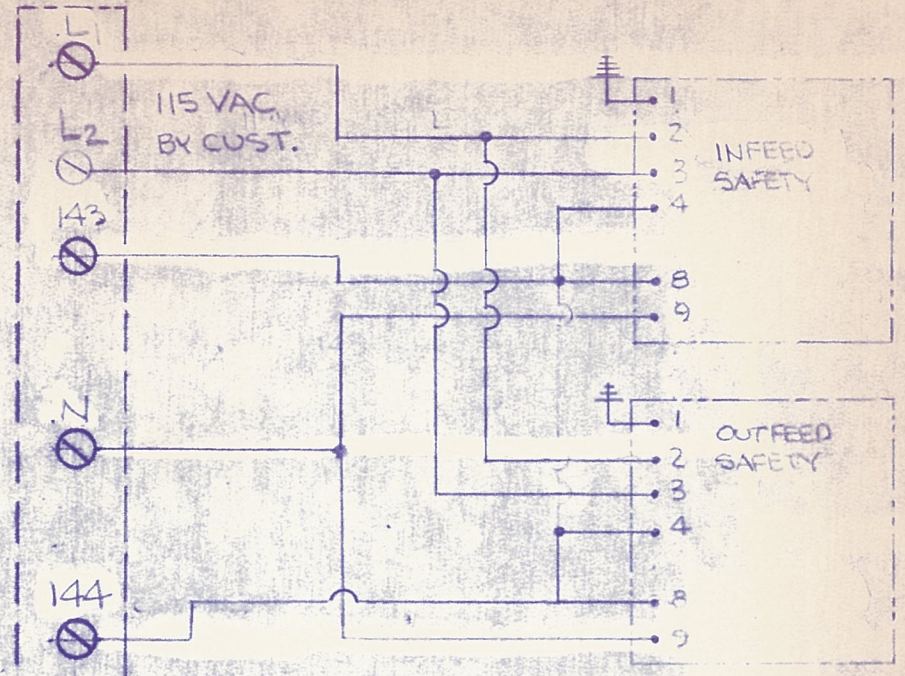
NO. REQUIRED _____

ORDER NO. _____

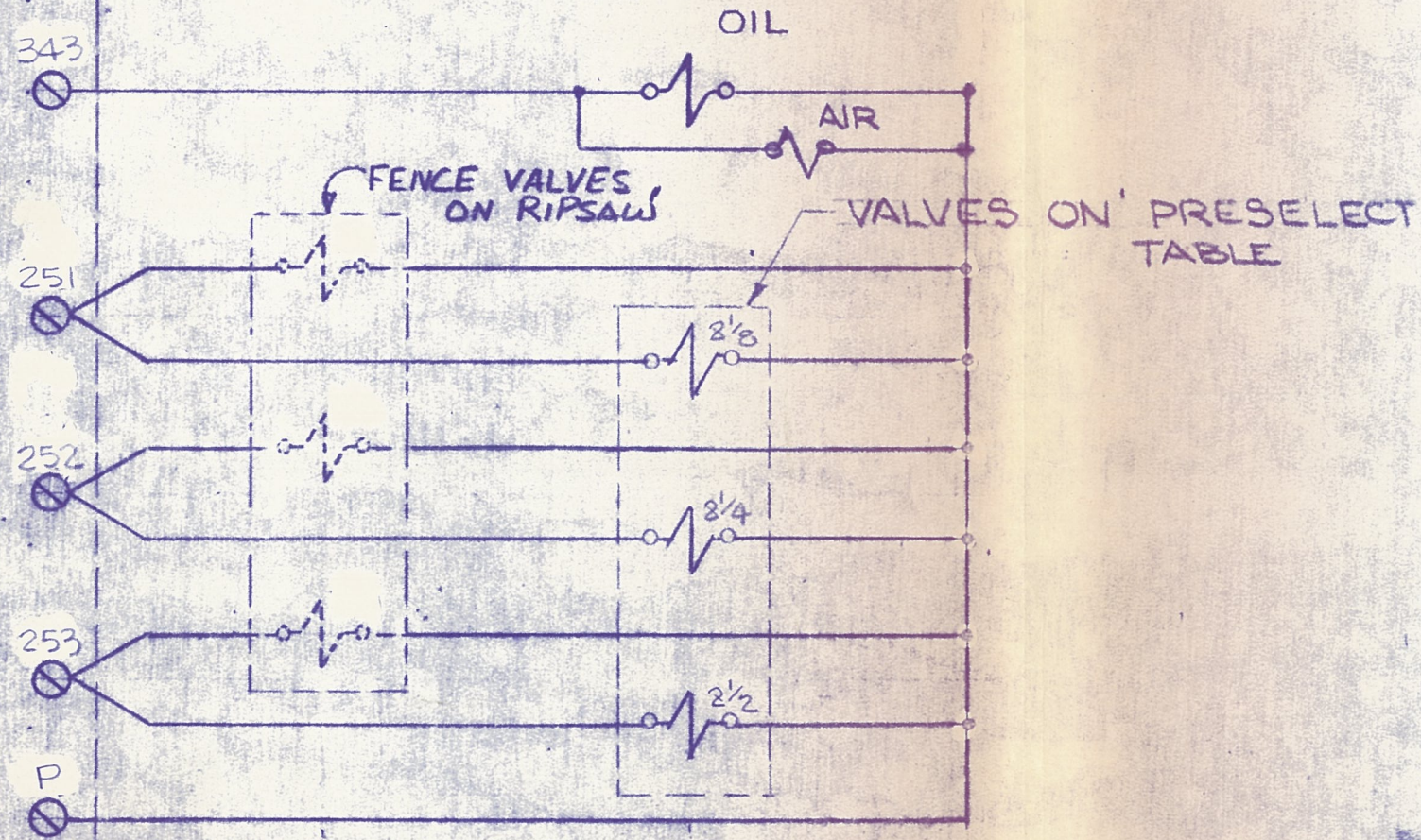
SYM.	DATE	REVISION	BY
MANUFACTURING TOLERANCES, UNLESS OTHERWISE STATED			
INCHES		UNDER 25'-0"	25'-0" & OVER
		$\pm \frac{1}{64}$	$\pm \frac{1}{8}$
		$\pm \frac{1}{8}$	$\pm \frac{1}{4}$
PORTLAND IRON WORKS			
PORTLAND, OREGON			
PRESELECT TABLE			
WIRING DIAGRAM			
REF. 19482-D			
DATE	13 MAR 86	DR. NORM	210
SCALE	NONE	CK.	9
DRAWING NUMBER		24558 B	

19482-B

SYM.	NO. REQ'D.	DESCRIPTION	DWG. NO.



OPCON 8171-6501
W/8586 TRANSISTOR



REF 24246-B

SYM.	DATE	REVISION	BY

MANUFACTURING TOLERANCES, UNLESS OTHERWISE STATED

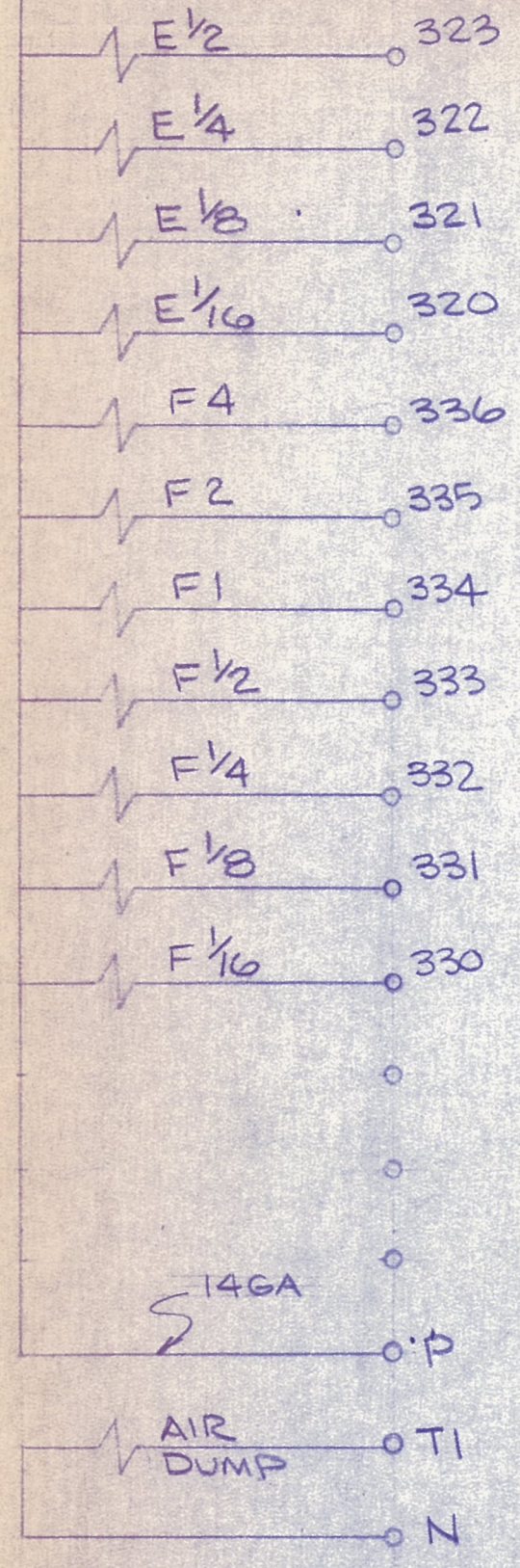
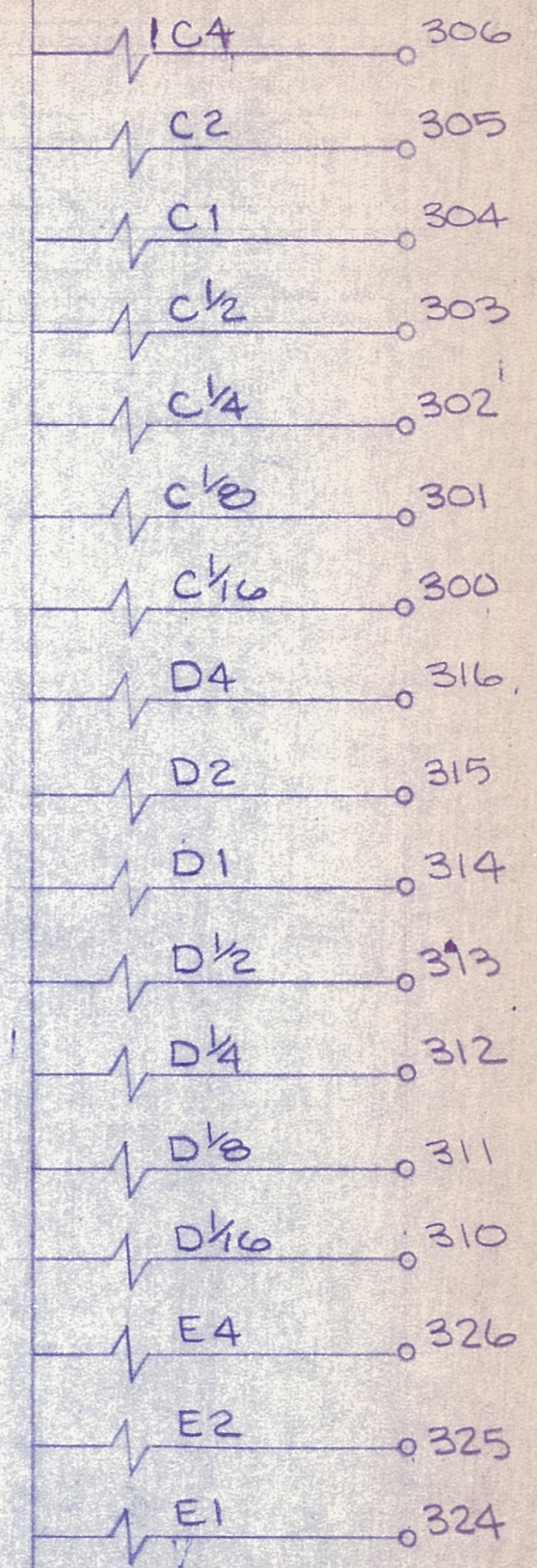
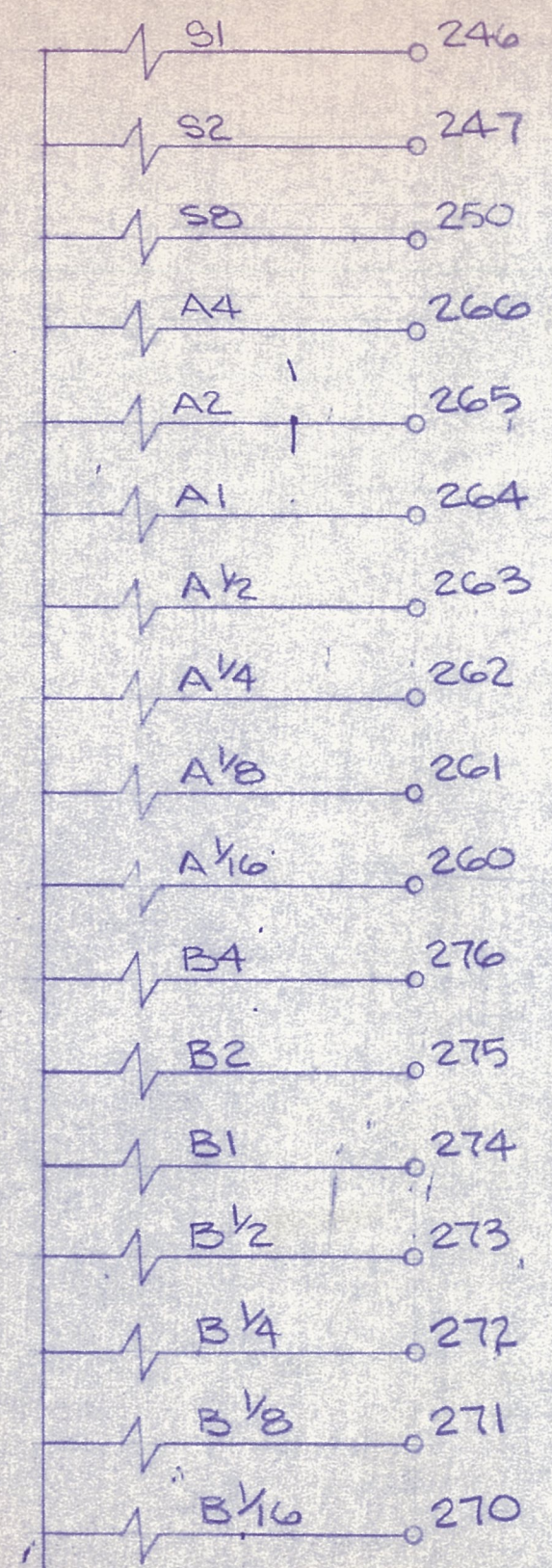
INCHES	UNDER 25'-0"	25'-0" & OVER
$\pm \frac{1}{64}$	$\pm \frac{1}{8}$	$\pm \frac{1}{4}$

PORTLAND IRON WORKS
PORTLAND, OREGON

RIPSAW WIRING
MACHINE WIRING
PROXIMITY SWITCHES

DATE 14 MAR 86	DR. NORM 206	DRAWING NUMBER
SCALE	CK. 9	24542-B

SYM.	NO. REQ'D.	DESCRIPTION	DWG. NO.



A	13 MAR 2016	REVISED	NORM
SYM.	DATE	REVISION	BY
MANUFACTURING TOLERANCES, UNLESS OTHERWISE STATED			
INCHES			
	UNDER 25'-0"	25'-0" & OVER	
	+1/-64	+1/-8	+1/-4
PORTLAND IRON WORKS			
PORTLAND, OREGON			
SETWORKS			
TERMINAL BOX WIRING			
DATE	05-1-4	DR. MAS 250	DRAWING NUMBER
SCALE	~	CK. 9	24453-B

SYM.	NO. REQ'D.	DESCRIPTION	DWG. NO.



SYM.	DATE	REVISION	BY
MANUFACTURING TOLERANCES, UNLESS OTHERWISE STATED INCHES UNDER 25'-0" 25'-0" & OVER $\begin{matrix} +1 \\ -64 \end{matrix}$ $\begin{matrix} +1 \\ -8 \end{matrix}$ $\begin{matrix} +1 \\ -4 \end{matrix}$			
PORTLAND IRON WORKS PORTLAND, OREGON			
GUIDE LINE TERMINAL BOX			
DATE	9 JUL 86	DR. NORM 115	DRAWING NUMBER
SCALE	—	CK. 9	24595 B

DESCRIPTION

DWG. NO.

10)

SYM.	DATE	REVISION	BY

MANUFACTURING TOLERANCES, UNLESS OTHERWISE STATED

INCHES	UNDER 25'-0"	25'-0" & OVER
$+\frac{1}{64}$	$+\frac{1}{8}$	$+\frac{1}{4}$
$-\frac{1}{64}$	$-\frac{1}{8}$	$-\frac{1}{4}$

PORTLAND IRON WORKS
PORTLAND, OREGON

TYPICAL TERMINAL
CONNECTION

DATE 17 MAR 86	DR. NORMAN	115	DRAWING NUMBER
SCALE 2	CK.	5	24564B