

SHOP ORDER 12980		PORTLAND IRON WORKS					PARTS LIST A24381	
CUSTOMER HARRIS		TITLE PRESELECTION TABLE - RH ZERO ASSEMBLY Multi-Memory 5 CHAIN					DATE February 25, 1986	
CHECK DED. PULL		ITEM NO.	TOTAL QTY	PART NO.	DESCRIPTION	REV. B	CODE 210	
A		1	1	A24381-D	Preselection Table Assembly			
A		2	1	A11151-D	Cross Section, Lumber Stop			
A		3	1	A11152-D	Cross Section, Feeder & Rollcase			
F/A		4	1	A24382-D	Frame Weldment			
S		5	10	9725-2-B	PB Base Plate (A=1")			
F/A		6	1	A24383-D	Frame Weldment			
S		7	*	9725-2-B	PB Base Plate (A = 1")			
S		8	5	9725-1-B	PB Base Plate (A = 1/2")			
S		9	16	10120-B	Foot Weldment			
S		10	5	11159-B	Chain Skid			
S		11	5	11158-B	Jump Skid			
F		12	1	24520B	Location Jig			
		13	1					
		14	1					
S		15	15	9100-19-B	Pin 5/8" Diameter x 3 1/2			
S		16	10	9731-B	Link (A = 5 1/2)			
		17	1	20743-B	Chain Guard			
F		18	1	24512B	DRIVE MOUNT ASSY.			
F/A		19	1	A24115-B	Head Shaft Assembly			
P		20	10	22-8	Sprocket C55-22T, 1 15/16 Bore TKW			
P		21	2		Sprocket B-636, 1 15/16 Bore, TKW DE in Plate			
P		22	25		PB 1 15/16 RASC FAFNIR			
F/A		23	1	A24111-B	Tail Shaft Assembly			
P		24	*	22-8	Sprocket C55-22T, 1 15/16 Bore, TKW			
P		25	5	22-8	Sprocket C55-22T, 2 1/4 Bore for Bushing			
P		26	5		Bushing, MASTEN #BB-3136-48			
P		27	*		Sprocket B-636, 1 15/16 Bore, TKW DE in Plate			
F		28	*		PB 1 15/16 RASC FAFNIR			
P		29	5		Set Collar 1 15/16			
A		29a	11	A9313-B	Carry-Over Wheel Assembly			
S		29b	11	9313-1-B	Wheel (Casting #5916-C) 5916-1-D			
S		29c	22	9313-2-B	Wheel Spider 5916-2-D			
S		29d	11	9313-3-B	Rubber Tire, 44 1/4" Long			
F/A		30	1	A24116-B	Skid Lift Shaft Assembly			
S		31	1	13823-1-B	Lever, Cylinder A = 8"			
S		32	5	9732-1-B	Lever A = 3"			
P		33	18		PB 1-7/16 RASC FAFNIR			

SHOP ORDER 12980		PORTLAND IRON WORKS				PARTS LIST A24381
CUSTOMER HARRIS		TITLE PRESELECTION TABLE - RH ZERO ASSEMBLY Multi-Memory 5 CHAIN				DATE February 25, 1986
TK DED. PULL	ITEM NO.	TOTAL QTY	PART NO.	DESCRIPTION	REV. B	DATE
	S	34	3	A8277-B	Roll Assembly	
	P	35	6		Sprocket TLB-618	
	P	36	6		Bushing TL-1610, 1 7/16 Bore	
	P	37	*		PB 1 7/16 RASC FAFNIR	
	S	38	3	a8276-B	Roll Assembly	
	P	39	*		Sprocket TLB-618	
	P	40	*		TL Bushing #1610, 1 7/16 Bore	
	P	41	*		PB 1 7/16 RASC FAFNIR	
	A	42	1	A24113-B	Carry-Over Wheel Shaft Assembly	
	A	43	*	A9313-B	Carry-Over Wheel Assembly	
	P	44	*	9313-1-B	Wheel (Casting #5916-C)	
	P	45	*	9313-2-B	Wheel Spider	
	P	46	*	9313-3-B	Rubber Tire, 4 1/4" Long	
	P	47	2		Sprocket, B-620, 1 15/16 Bore, TKW DE in Plate	
	P	48	*		PB 1 15/16 RASC FAFNIR	
	F/A	49	1	A24385-B	Board Holding Shaft Assembly	
		50	13	A8379-B	Holding Arm Assembly	
	S	51	13	8381-B	Holding Arm	
	S	52	13	14745-B	Holding Arm Hub	
		53				
	S	54	1	11161-B	Lever	
	P	55	*		PB 1 15/16 RASC FAFNIR	
	F/A	56	1	A11163-B	Jack Shaft Assembly	
	P	57	2		Sprocket, B-620, 1 7/16 Bore, TKW DE in Plate	
	P	58	*		PB 1 7/16 RASC FAFNIR	
	F/A	59	1	A8278-B	Idler Assembly	
	P	60	1		Sprocket B616, 1" Bore, SS	
	P	61	2		PB 1" RASC FAFNIR	
	P	62	3		Sprocket, TLB-620	
	P	63	1		Sprocket, TLB-616	
	P	64	3		TL Bushing #2012 x 1 5/8" Bore	
	P	65	1		TL Bushing #1610 x 1" Bore	
	P	66	1		Riveted Roller Chain #60 x 520 Pitches (32'-6" Long)	
		67	2		Riveted Roller Chain #60 x 90 Pitches (5'-7 1/2" Long)	
	P	68	1		Riveted Roller Chain #60 x 64 Pitches (4'-0" Long)	
	P	69	1		Riveted Roller Chain #60 x 144 Pitches (9'-0" Long)	
	P	70	5		Riveted Roller Chain #CA550 x _____'-0" (LINK-BELT Only)	

(12 BD= 46' x) NO SUBSTITUTE

SHOP ORDER 12980		PORTLAND IRON WORKS				PARTS LIST A24381
CUSTOMER HARRIS		TITLE PRESELECT TABLE - RH ZERO ASSEMBLY Multi-Memory 5 CHAIN				DATE February 25, 1986
WORK DED. PULL		ITEM NO.	TOTAL QTY	PART NO.	DESCRIPTION	SHEET 3 OF 5 CODE 210
						REV. B DATE
F		71	5	11166-B	Chain Race	
F		72	5	19779-B	Intermediate Chain Race for "A" Board Memory ^{A= 12 Bd} _{B= 6 Bd}	
P		73			Hydroline R2-C-3/4" x 2" Cushion Both Ends DETS 74, 75 & 76	
P		74	1		Cylinder, Hydroline, 2" Stroke (Lumber Stop)	
P		75	1		Cylinder, Hydroline, 4" Stroke (Skid)	
P		76	2		Cylinder, Hydroline, 2" Stroke (Feed)	
		77				
P		78	4		Rear Clevis Bracket, Hydroline C-8904	
		79				
P		80	4		Rod Clevis, Hydroline C-134-08	
		81				
P		82	8		Pin Shrader 5153-8000	
		83				
P		84	6		Snap Rings, H069-32	
A		85	1	A 2, 4, 5, 3, 2, D	Adjustable Guide Fence Assembly	
F/A		86	1	24387-B	Guide Fence Weldment	
		87	1	8287-B	Fence End Support Weldment	
S		88	1	8288-B	Fence Center Support Weldment	
F		89	1	22269-B	Nose Piece	
F		90	1	22270-B	Adjustable End Piece	
		91				
		92				
S		93	2	8289-B	Crank Arm Pedestal	
A		94	2	A8290-B	Crank Arm Assembly	
S		95	2	A8290-1-B	Crank Arm Weldment	
P		96	2		Bearing Outer Race Assembly, HJ202820 TORRINGTON	
P		97	2		Bearing Inner Race Assembly, IR162020 TORRINGTON	
S		98	2	8291-B	Crank Arm Retainer	
S		99	2	8292-B	Fence Clevis Weldment	
P		100	6	A6599-A	Increment Cylinder, 2" Diameter, per SK-1079-A	
F		101	1	19100-B	Pivot Post Mount	
P		102	6		Valve, 4-Way, VALVAIR Mini-King N195-26001, 24V DC	
S		103	2	8626-B	Pipe Header	
		104	2	8625-B	Valve Mount Plate	
B/S		105	2		Reducer Bushing 3/4 x 1/2 pipe	
B/S		106	24		Male Adapter 1/8 x 1/4 LENZ #5105 - 1/4-4	
B/S		107	12		Male Adapter 1/4 x 1/4 LENZ #5105 - 1/4-4	
B/S		108	36		Swivel Fitting 1/4 Hose LENZ #301-4-4	

SHOP ORDER
12980
 CUSTOMER
HARRIS

PORTLAND IRON WORKS
 TITLE
PRESELECTION TABLE - RH ZERO ASSEMBLY
Multi-Memory 5 CHAIN

PARTS LIST A24381
 DATE **February 25, 1986**
 SHEET **4** OF **5** CODE **210**

STOCK DED.	PULL	ITEM NO.	TOTAL QTY	PART NO.	DESCRIPTION	REV.	DATE
		109					
B/S		110	1		Hose 1/4 ID, LENZ # 4 YR x 40'-0"		
S		111	4	7411-B	Rod Clevis		
F		112	1	A24119-B	Lumber Stop Assembly		
F		113	1	11266-B	Lumber Stop Plate		
S		114	4	8357-B	Block Slotted		
S		115	1	8355-B	Cylinder Arm		
P		116	4		Bearing Outer Race Assembly, HJ122012 TORRINGTON		
P		117	4		Bearing Inner Race Assembly IRO81216 TORRINGTON		
S		118	4	9733-B	Washer		
P		119	2		Limit Switch, MICRO #208 LS1 w/Term Block 18 PA 1		
P		120	1		Limit Switch, MICRO #201 LS1 w/Term Block 18 PA 1		
S		121	2	8299-B	Fence Cylinder Anchor		
F		122	1	11179-B	Mounting Plate (Feed Cylinder)		
F		123	2	11181-1-B	Mounting Bracket		
		124					
		125	1	8926-B	Mounting Plate (Skid Cylinder)		
		126					
		127					
P		128	1		Gearmotor, 175 RPM, 1 HP, MORSE #20GCT 10 LR, 220/440, 3 PH, 60 Cycle, TEPC, 56C Frame		
P		129	1		Gearmotor, 35 RPM, 1 1/2 HP, MORSE #35GCT 50LR 220/440, 3 PH, 60 Cycle, TEFC, 145TC Fr.		
P		130	1		Gearmotor, 70 RPM, 3 HP, MORSE #35GCT 25 LR 220/440, 3 PH, 60 Cycle, TEFC, 182TC Frame		
		131					
P		132	1	11006-B	SW Treadle		
P		133	2		P.B. FAFNTR RASC 3/4		
P		134	1	12040-B	Switch Mount		
A		136	1	13826-B	Pneumatic Assembly, Box "B" (See PL 13826-B)		
A		137	1	13722-B	Pneumatic Assembly, Box "A" (See PL)		
A		138	1		Table Wiring Diagram		
A		139	1	24533B	Electrical Schematic		
		140	1	24534B	Pneumatic Schematic		
		141	1		Terminal Panel Box "A" (Refer to DWG.)		
		142	1		Terminal Panel Box "B" (Refer to DWG.)		

1	GUIDE FENCE	24387
2	FENCE END SUPPORT	8287
3	FENCE CENTER SUPPORT	8288
4		
5	CRANK ARM PEDISTAL	8289
6	CRANK ARM	8290
7	CRANK ARM RETAINER	8291
8		
9		
10	INCREMENT CYL. ROD	8292
11	VALVE MOUNTING PLATE	8293
12	VALVE CYMOUNTING NUTS	2411
13	PIPE HEADER	8294
14	PIPE PLUG	
15	12 MALE ADAPTER PIPE FITTING	
16	24 MALE PIPE FITTING	
17	36 SWIVEL HOSE FITTING	
18	SWITCH TREADLE	1006
19	SWITCH MOUNT	12640
20	LIMIT SW. MICRO 2011	
	TERM. BLK. 18PA1	
21	2 BEARING FABRIC BASE	84
22	4 ROD CLEWS	7411-B
23	1 PIVOT POST MOUNT	18100-B

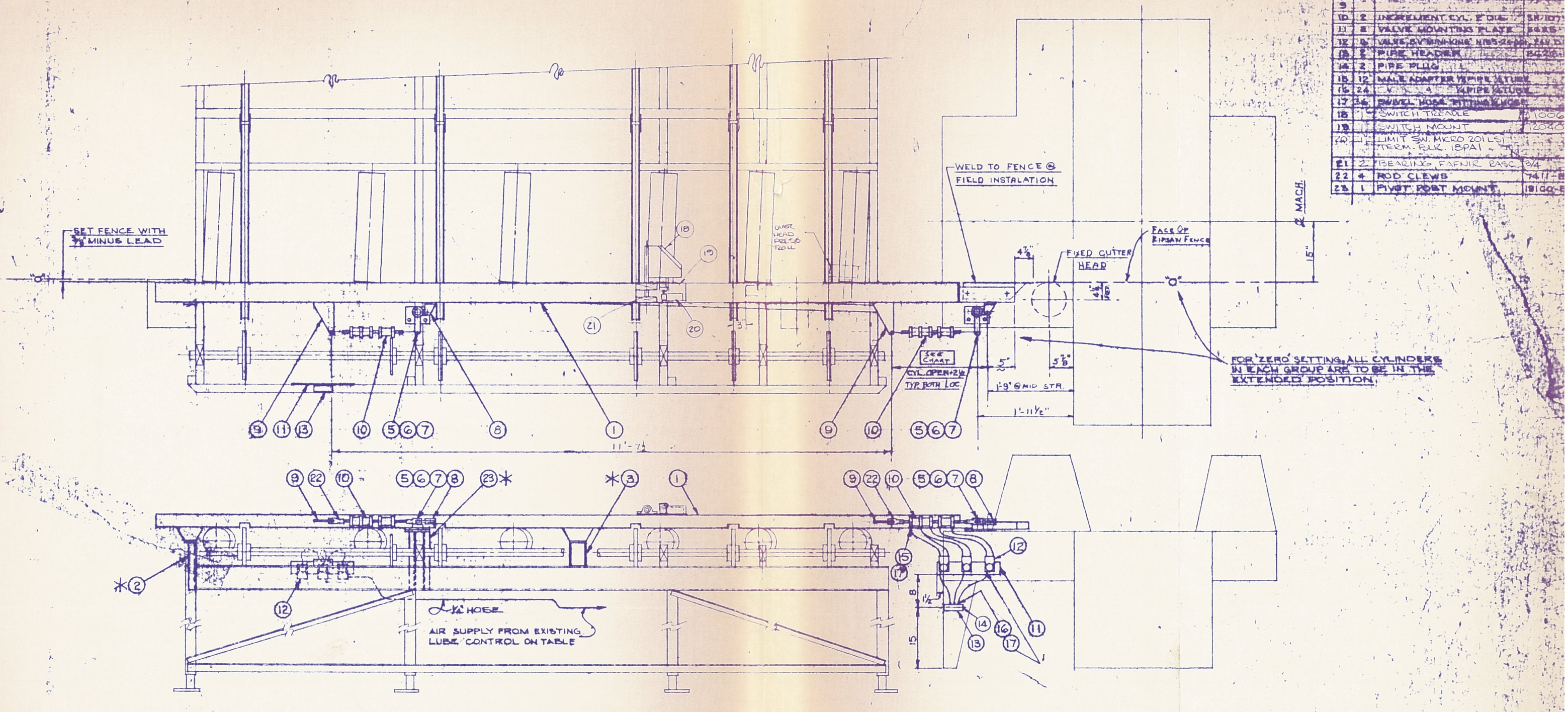


CHART	
For 3 Cyls. ± 1	DIMENSION IS 24"

* POSITION & WELD AT ASS'Y

BY	DATE	REVISION
MANUFACTURING TOLERANCES UNLESS OTHERWISE STATED		
INCHES: UNDER 18" - .005" 18" - 30" - .010" OVER 30" - .015"		
PORTLAND IRON WORKS		
PORTLAND, OREGON		
PRESELECTION TABLE		
GUIDE FENCE ASSEMBLY		
(5 CHAIN ASSEM.)		
R.H. LEED MACH.		
11/28 FEB. 50 11/11/210		
A245320		

JRL

SHOP ORDER
12980
 CUSTOMER
HARRIS

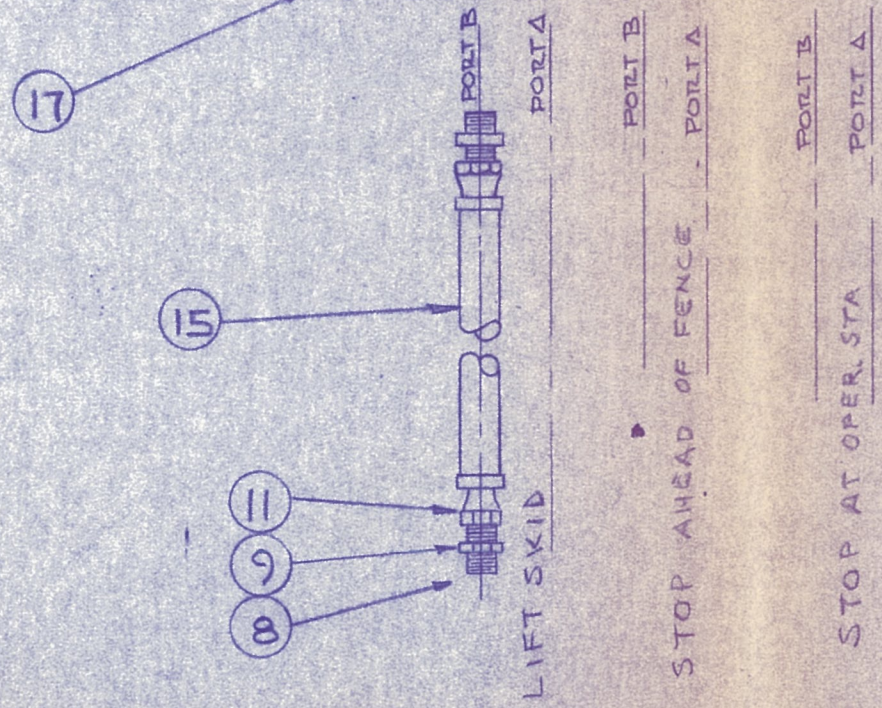
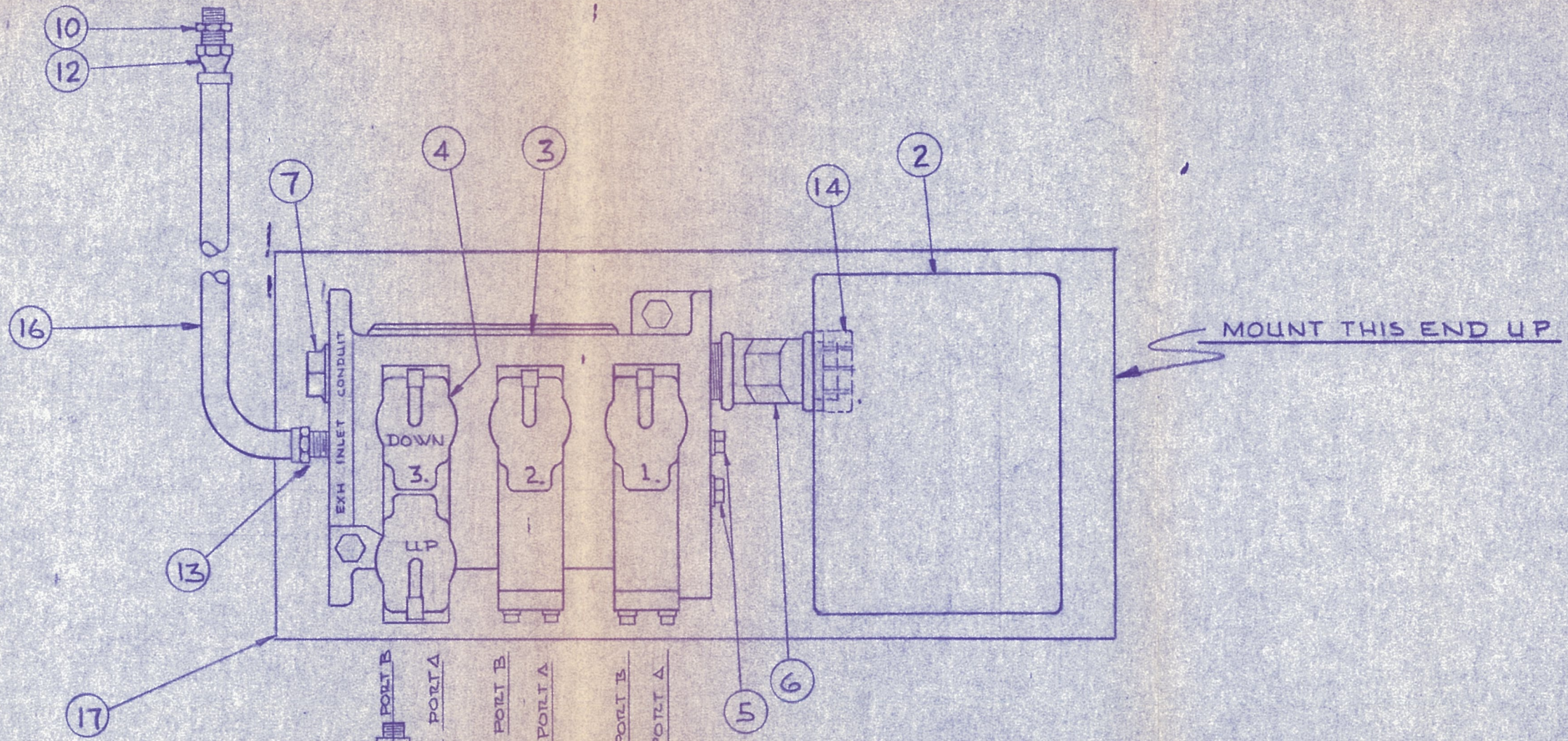
PORTLAND IRON WORKS

PARTS LIST A 13826-B
 DATE June 3, 1971
 SHEET 1 OF 1 CODE 210

TITLE PRESELECTION TABLE
 PNEUMATIC ASSEMBLY

STOCK DED. PULL	ITEM NO.	TOTAL QTY	EACH ASSY	PART NO.	DESCRIPTION	REV.	DATE
	1	1	1	A 13826-B	Preselection Pneumatic Assembly		
P	2	1	1		Electrical Box, HOFFMAN A-806LP ^{PANEL} A-806		
P	3	1	1		Three Station Plug-In Manifold Base #K142-076 assembled with two Single Solenoid 4-Way Valves #L445-23-102, 24V DC, & one Double Solenoid 4-Way Valve #L415-23-102, 24V DC		
	4						
A/S	5	2	2		Pipe Plug 1/2" NPT		
	6	1	1		Offset Connector 1 1/2"		
	7	1	1		Pipe Plug, 1 1/2" NPT		
	8	6	6		Reducer, 1/2" to 1/4" NPT		
	9	8	8		Adapter, LENZ #5105-1/2-5		
	10	1	1		Adapter, LENZ #5105-3/8-6		
	11	8	8		Swivel Hose Fitting, LENZ #301-5-4		
	12	1	1		Swivel Hose Fitting, LENZ #301-6-6		
	13	1	1		Hose Fitting, LENZ #312-6-6		
	14	1	1		Conduit Bushing, 1 1/2"		
	15	1	1		Hose, LENZ #4 YR (Cut to Suit)		
A/S	16	1	1		Hose, LENZ #6 YR (Cut to Suit)		
F	17	1	1		Mount Plate, 1/2" PL x 12" x 18"		

SYM.	NO. REQD.	DESCRIPTION	DWG. NO.



1. FOR WIRING SEE MASTER P.L.
2. MOUNT VALVE W/STEM HORIZONTAL.

SEE A15616-B FOR DBL. SOL. VALVES

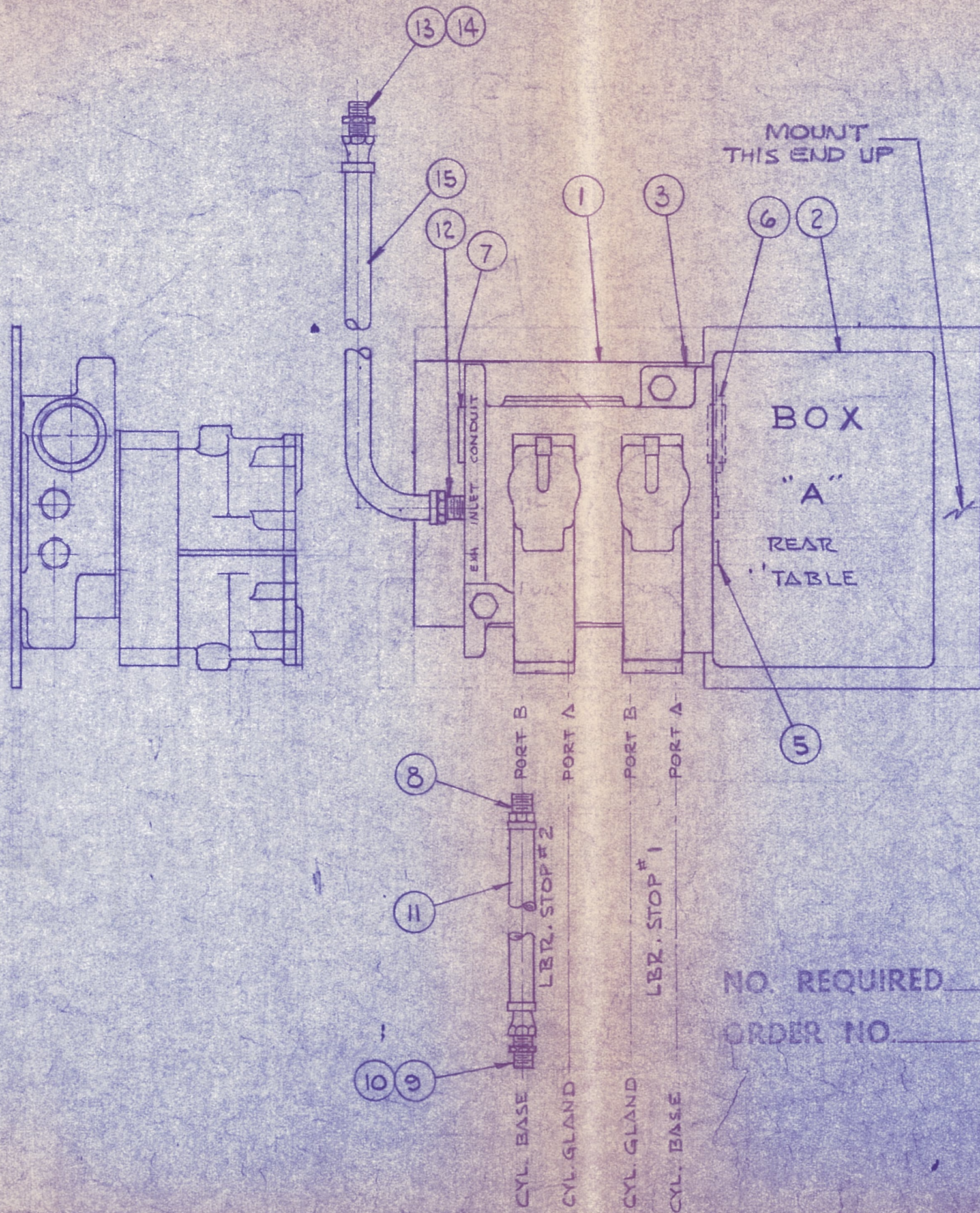
SYM.	DATE	REVISION	BY

PORTLAND IRON WORKS
PORTLAND, OREGON

PRESELECTION TABLE
PNEUMATIC ASSEMBLY

DATE 6-2-71	DR. 124	210	DRAWING NUMBER
SCALE	CL.	15	A13826-B

B



SYM.	NO. REQD.	DESCRIPTION	DWG. NO.
1	1	MOUNT PLATE	11962-B
2	1	ELEC. BOX, HOFFMAN 6x8	
3	1	TWO STATION PLUG-IN MANIFOLD BASE VALVAIR #F5146V, ASSEMBLED WITH TWO SINGLE SOLENOID PILOT OPERATED 4-WAY VALVES, VALVAIR PA-120 (PLUG-IN TYPE) 24 VDC	
4	1		
5	2	1/2 NPT PIPE PLUG	
6	1	1/4 CONDUIT x 1" LG	
7	1	1/4 NPT PIPE PLUG	
8	4	HOSE FITTING, LENZ # 312-4-4	
9	4	SWIVEL FITTING, LENZ # 301-5-4	
10	4	MALE ADAPTOR, LENZ # 5105-1/4-5	
11	1	HOSE, 1/4 I.D. x 14' LENZ # 4-YR	
12	1	HOSE FITTING, LENZ # 312-6-6	
13	1	SWIVEL FITTING, LENZ # 301-6-6	
14	1	MALE ADAPTOR, LENZ # 5105-3/8-6	

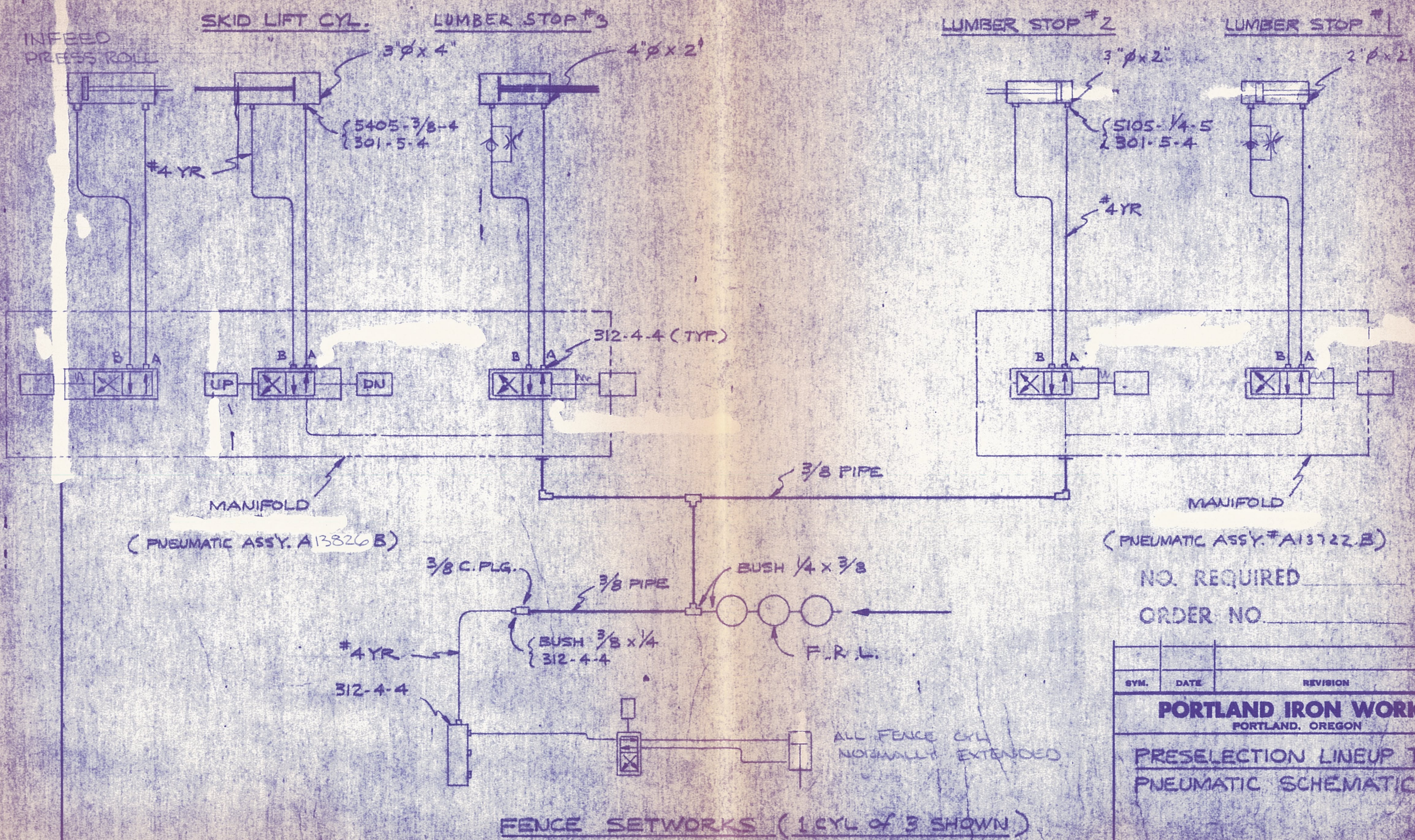
NOTE

- 1. FOR WIRING SEE MASTER P.L.
- 2. MOUNT w/ VALVE STEM HORIZONTAL

NO. REQUIRED _____
 ORDER NO. _____

SYM.	DATE	REVISION	BY
PORTLAND IRON WORKS PORTLAND, OREGON			
PRESELECTION TABLE PNEUMATIC ASSEMBLY			
DATE	3-24-71	DR. AK	210
SCALE	NONE	CK.	15
DRAWING NUMBER		A13722-B	

SYM.	NO. REQD.	DESCRIPTION	DWG. NO.



NO. REQUIRED _____

ORDER NO. _____

SYM.	DATE	REVISION	BY
PORTLAND IRON WORKS PORTLAND, OREGON			
PRESELECTION LINEUP TABLE PNEUMATIC SCHEMATIC			
DATE 28 FEB 86	DR. 210	DRAWING NUMBER	
SCALE NONE	PL. 15	24536 B	

SHOP ORDER
12980

PORTLAND IRON WORKS

PARTS LIST A 22958-D

CUSTOMER
HARRIS

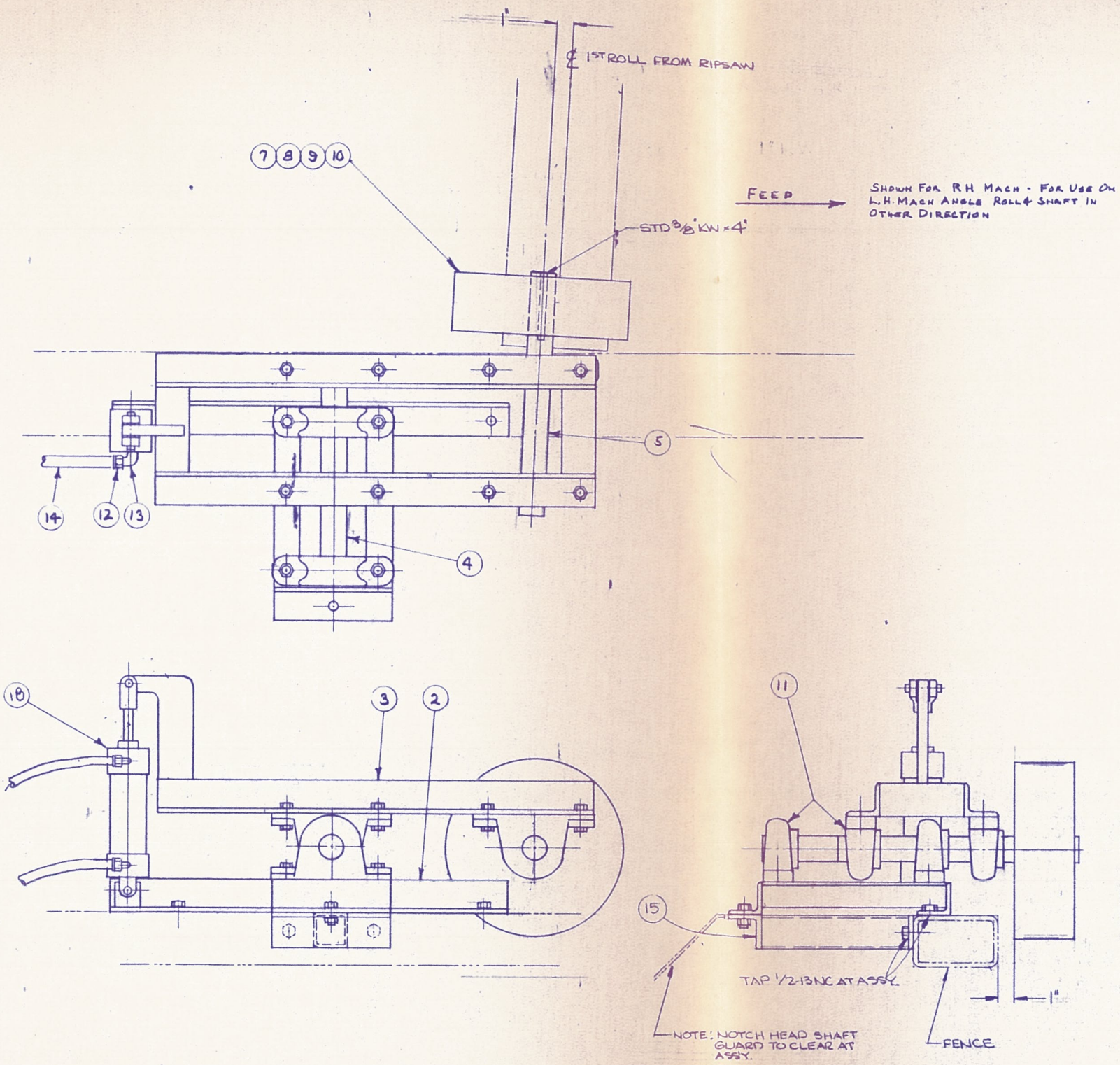
TITLE PRESELECT TABLE
FENCE LINE PRESS ROLL

DATE JUNE 2, 1981

SHEET 1 OF 1 CODE 210-

WHEEL DED. PULL	ITEM NO.	TOTAL QTY	PART NO.	DESCRIPTION	REV. B	DATE 4 MAR 80
A	1	1	A22958D	ASSEMBLY		
F	2	1	22959B	BASE WELDMENT		
F	3	1	22960B	ARM WELDMENT		
	4	1		PIVOT SHAFT 1 1/2" DIA X 15" LONG		
	5	1		ROLL SHAFT 1 1/2" DIA X 14 1/2" LONG		
	6	1		WHEEL ASSY		
S	7	1	9969	WHEEL HUB		
S	8	2	30-4	WHEEL RIM		
S	9	1	11497-1-B	TIRE 4.10/3.50-4 BLACK		
S	10	1	30-1	TUBE FOR TIRE		
P	11	6		PILLOW BLOCK, PAFNIR RASC 1 1/2"		
A/S	12	4		HOSE FITTING 1/4 X 1/4 SWIVEL		
A/S	13	2		HOSE FITTING 1/4 FLARE X 3/8 NPT X 90°		
A/S	14	2		HOSE 1/4 9' LONG		
F	15	1	24538B	MOUNT BRACKET		
	16					
	17					
P	18	1		CYLINDER, HYDROLINE R2C 2" BORE X 3" STROKE, CUSHION BOTH ENDS		
P	19	1		CLEVIS HYDROLINE C-134-05		
P	20	1		PIN, SCHRADER C-9003-3		
P	21	1				
				(REF 13826 PARTS LIST)		

SYM.	NO. REQD.	DESCRIPTION	DWG. NO.



SYM.	DATE	REVISION	BY
A	4-MAR-58	ADDED MOUNTING HOLES TO FENCE - DELETED UNO, HOWEL	NORM

MANUFACTURING TOLERANCES, UNLESS OTHERWISE STATED:
 INCHES UNDER .25" ±.001
 .25" & OVER ±.005

PORTLAND IRON WORKS
 PORTLAND, OREGON

PRESELECT TABLE
 FENCE LINE PRESS ROLL

DATE 6-3-51 AK 210 DRAWING NUMBER
 SCALE 3/4" = 1" 1/4" A 22958-D